

MZT01

EXPOSED THERMOSTATIC SHOWER MIXER



meir®

MATTE BLACK
MZT01

TIGER BRONZE
MZT01-BB

CHAMPAGNE
MZT01-CH

BRUSHED NICKEL
MZT01-PVDBN

CHROME
MZT01-C

AVAILABLE FINISHES

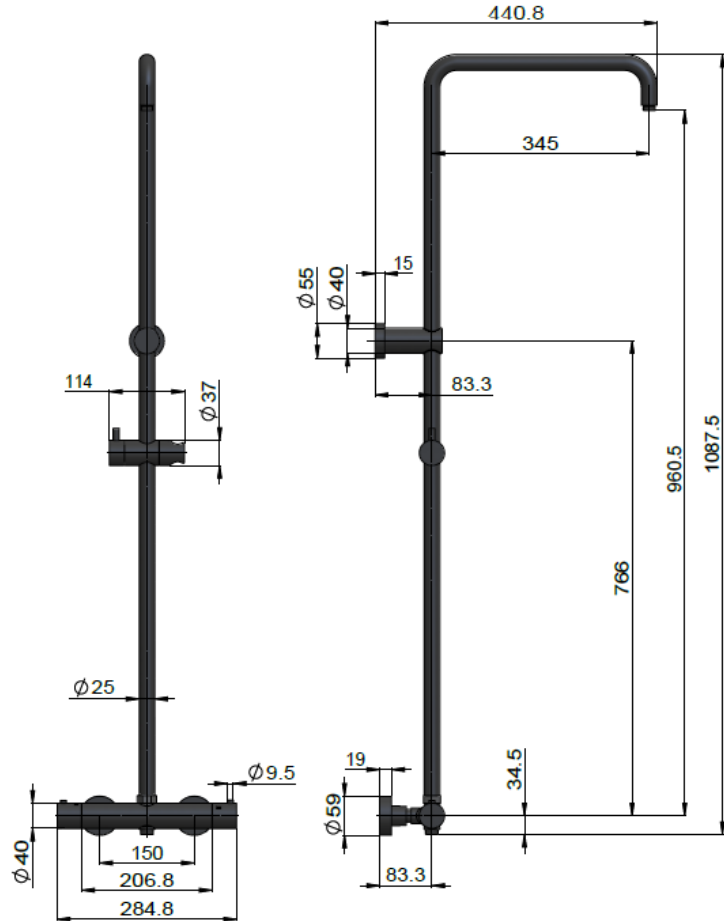
FEATURES

- 10 Year warranty
- Flow rate 14 L/min
- European thermostatic cartridge
- Solid brass construction
- Box Weight 4.6 kg
- Excludes the shower head and hand shower.

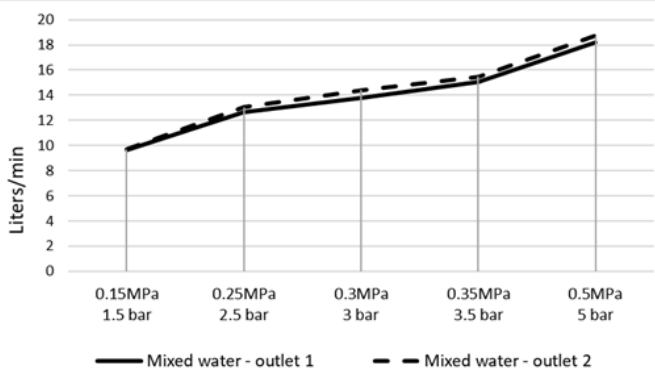
CARE

- Do not install tapware using any form of acetone silicones.
- Do not apply physical items (such as tools) directly to the product.
- Never use house-hold or commercial detergents, citrus based cleaners, or abrasive cleaners.
- Clean using a mild washing soap solution. Rinse and dry with a soft cloth.
- Check for any product defects before installation.
- Refer to the Installation Manual for correct installation.

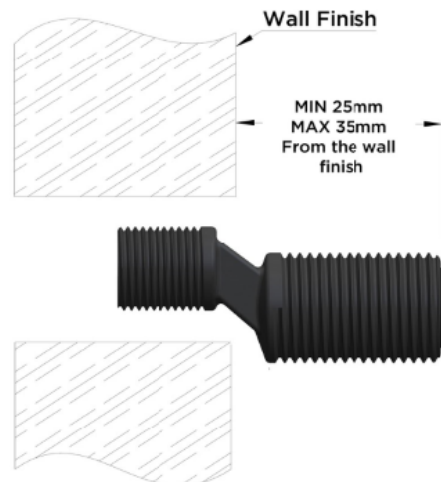
SPECIFICATIONS



FLOW RATE GRAPH



TOLERANCE

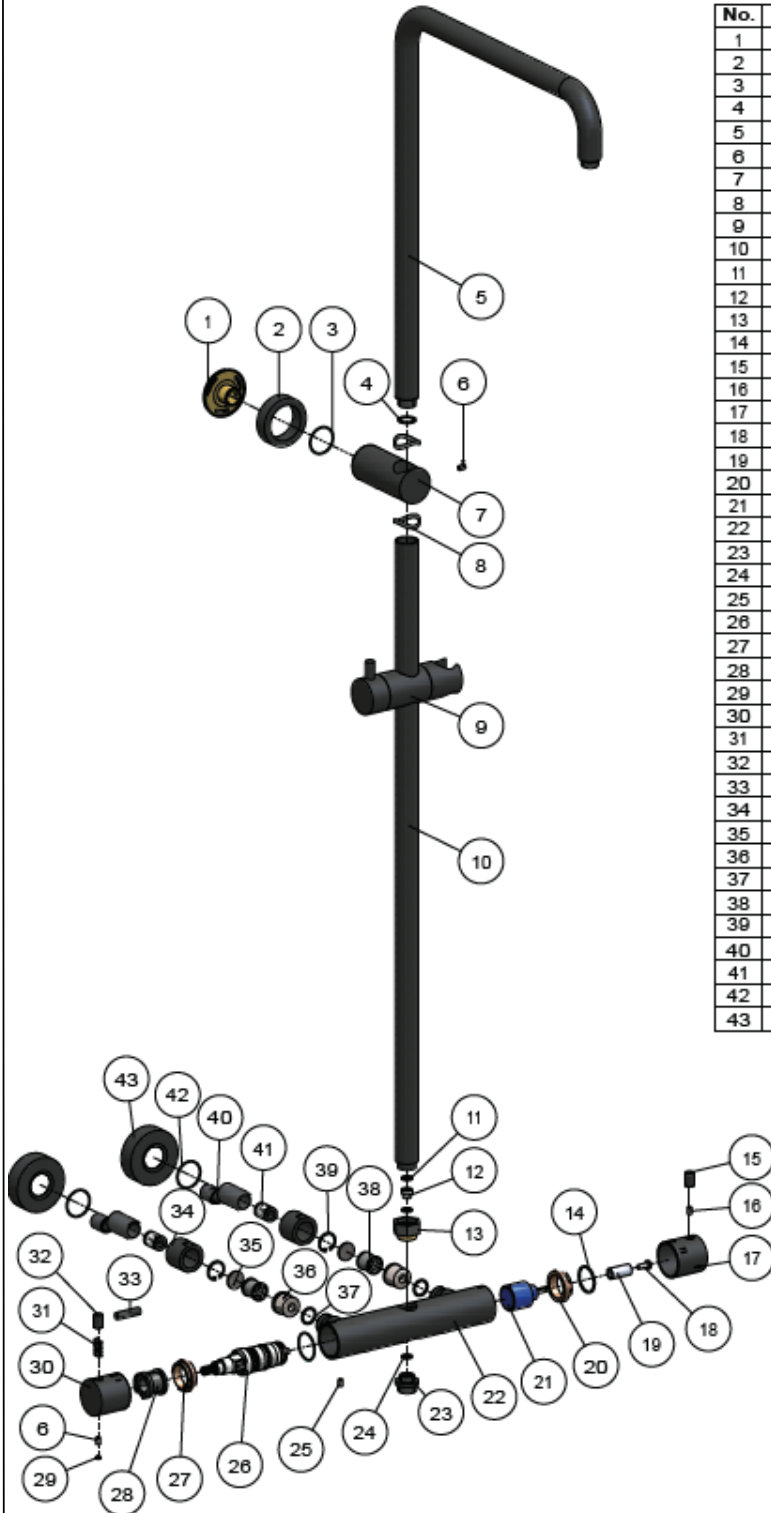


MZT01

EXPOSED THERMOSTATIC SHOWER MIXER

meir®

EXPLODED VIEW



| No. | Part Name | Qty. |
|-----|------------------------|------|
| 1 | Base | 1 |
| 2 | Decoration Cover | 1 |
| 3 | O-ring | 1 |
| 4 | O-ring | 1 |
| 5 | Round Spout | 1 |
| 6 | Screw | 2 |
| 7 | Base | 1 |
| 8 | Protective Sleeve | 2 |
| 9 | Bracket | 1 |
| 10 | Straight Pipe | 1 |
| 11 | Flat Washer | 1 |
| 12 | Connector | 1 |
| 13 | Hex Nut | 1 |
| 14 | Wearing Ring | 2 |
| 15 | Pin Lever | 1 |
| 16 | Screw | 1 |
| 17 | Handle Cap | 1 |
| 18 | Screw | 1 |
| 19 | Connector | 1 |
| 20 | Nut | 1 |
| 21 | Diverter Cartridge | 1 |
| 22 | Body | 1 |
| 23 | Connector | 1 |
| 24 | O-ring | 2 |
| 25 | Screw | 1 |
| 26 | Thermostatic Cartridge | 1 |
| 27 | Nut | 1 |
| 28 | Limite Cover | 1 |
| 29 | Decoration Button | 1 |
| 30 | Handle | 1 |
| 31 | Spring | 1 |
| 32 | Button | 1 |
| 33 | Limited Collar | 1 |
| 34 | Nut | 2 |
| 35 | Strainer | 2 |
| 36 | Connector | 2 |
| 37 | O-ring | 2 |
| 38 | Check Valve | 2 |
| 39 | Snap Ring | 2 |
| 40 | Elbow Joint | 2 |
| 41 | Silencer | 2 |
| 42 | O-ring | 2 |
| 43 | Bake Plate | 2 |



MH04 SHOWER ROSE

meir®

MATTE BLACK
MH04

CHROME
MH04-C

CHAMPAGNE
MH04-CH

**TIGER
BRONZE**
MH04-BB

**BRUSHED
NICKEL**
MH04-PVDBN

**AVAILABLE
FINISHES**



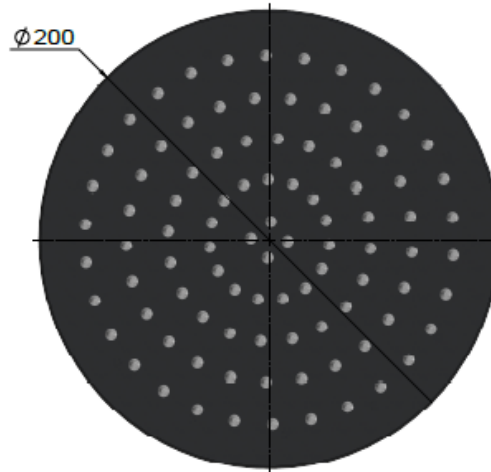
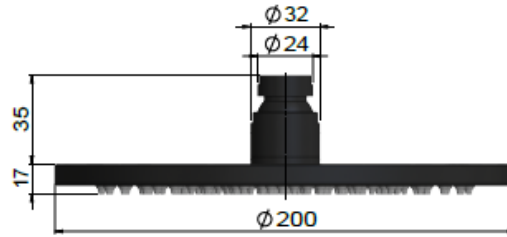
FEATURES

- 10 Year warranty
- Flow rate 9L p/m
- Solid brass construction
- Box Weight 1.1 Kg

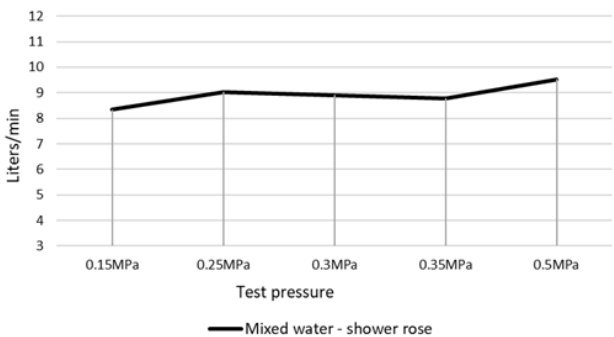
CARE

- Do not install tapware using any form of acetone silicones.
- Do not apply physical items (such as tools) directly to product.
- Never use house-hold or commercial detergents, citrus based cleaners, or abrasive cleaners.
- Clean using a mild washing soap solution rinsed, and dry with a soft cloth.
- Check for any product defects before installation.
- Refer to the installation manual for correct installation.

SPECIFICATIONS



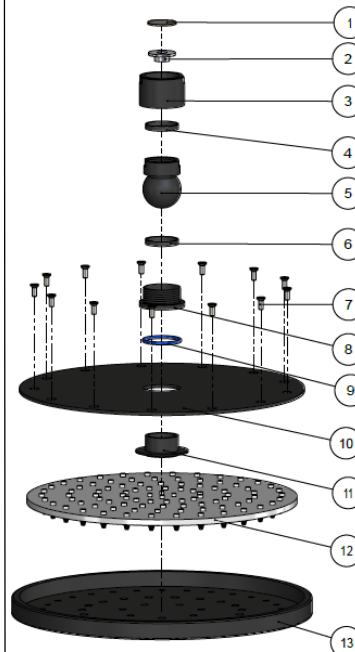
FLOW RATE GRAPH



CREDENTIALS

- Watermark AS/NZS3718WMKA25013
- Wels Rated 3 Star

EXPLODED VIEW



| No. | Part Name |
|-----|-----------------|
| 1 | Strainer |
| 2 | Flow Controller |
| 3 | Nut |
| 4 | Wearing Ring |
| 5 | Universal Ball |
| 6 | Wearing Ring |
| 7 | Screw |
| 8 | Connet Nut |
| 9 | O-ring |
| 10 | Cover Plate |
| 11 | Connector |
| 12 | Rubber Gasket |
| 13 | Plate |

MH05 SHOWER ROSE

meir®

MATTE BLACK
MH05

CHROME
MH05-C

CHAMPAGNE
MH05-CH

**TIGER
BRONZE**
MH05-BB

**BRUSHED
NICKEL**
MH05-PVDBN

**AVAILABLE
FINISHES**



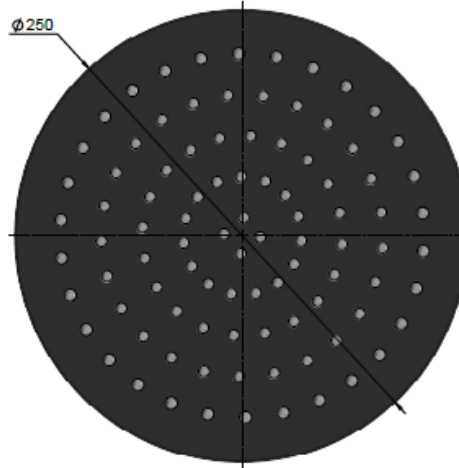
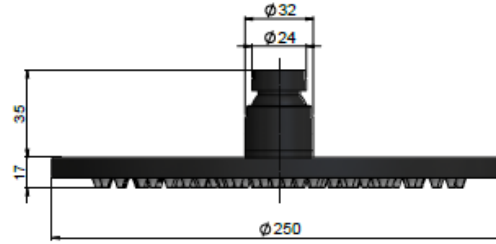
FEATURES

- 10 Year warranty
- Flow rate 9L p/m
- Solid brass construction
- Box Weight 1.4 Kg

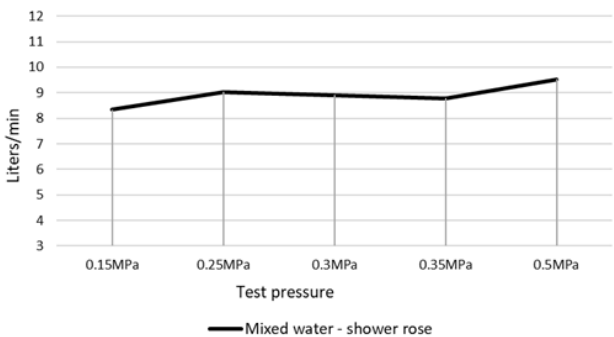
CARE

- Do not install tapware using any form of acetone silicones.
- Do not apply physical items (such as tools) directly to product.
- Never use house-hold or commercial detergents, citrus based cleaners, or abrasive cleaners.
- Clean using a mild washing soap solution rinsed, and dry with a soft cloth.
- Check for any product defects before installation.
- Refer to the installation manual for correct installation.

SPECIFICATIONS



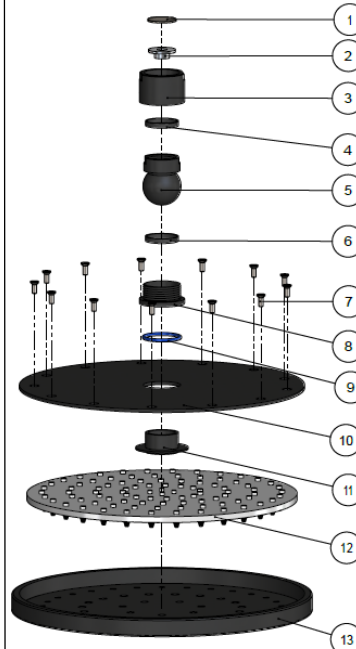
FLOW RATE GRAPH



CREDENTIALS

- Watermark AS/NZS3718WMKA25013
- Wels Rated 3 Star

EXPLODED VIEW



| No. | Part Name |
|-----|-----------------|
| 1 | Strainer |
| 2 | Flow Controller |
| 3 | Nut |
| 4 | Wearing Ring |
| 5 | Universal Ball |
| 6 | Wearing Ring |
| 7 | Screw |
| 8 | Connet Nut |
| 9 | O-ring |
| 10 | Cover Plate |
| 11 | Connector |
| 12 | Rubber Gasket |
| 13 | Plate |

MH06

SHOWER ROSE

meir®

MATTE BLACK
MH06

CHROME
MH06-C

CHAMPAGNE
MH06-CH

**TIGER
BRONZE**
MH06-BB

**BRUSHED
NICKEL**
MH06-PVDBN

**AVAILABLE
FINISHES**



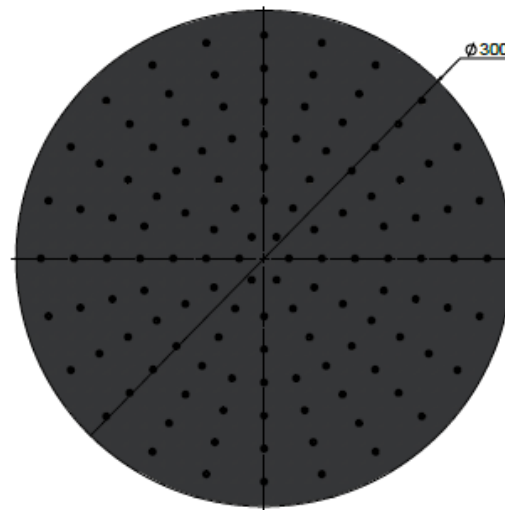
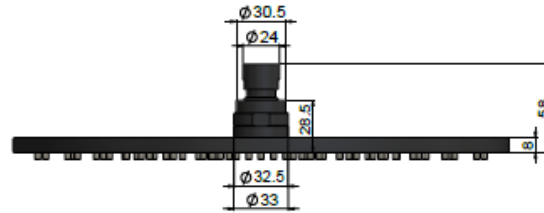
FEATURES

- 10 Year warranty
- Flow rate 9L p/m
- Solid Brass construction
- Box Weight 2.0 Kg

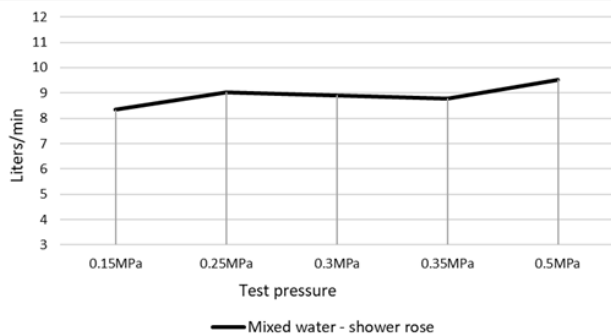
CARE

- Do not install tapware using any form of acetone silicones.
- Do not apply physical items (such as tools) directly to product.
- Never use house-hold or commercial detergents, citrus based cleaners, or abrasive cleaners.
- Clean using a mild washing soap solution rinsed, and dry with a soft cloth.
- Check for any product defects before installation.
- Refer to the installation manual for correct installation.

SPECIFICATIONS



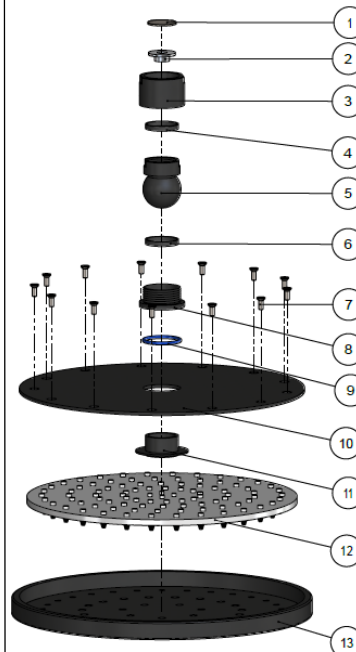
FLOW RATE GRAPH



CREDENTIALS

- Watermark AS/NZS3718WMKA25013
- Wels Rated 3 Star

EXPLODED VIEW



| No. | Part Name |
|-----|-----------------|
| 1 | Strainer |
| 2 | Flow Controller |
| 3 | Nut |
| 4 | Wearing Ring |
| 5 | Universal Ball |
| 6 | Wearing Ring |
| 7 | Screw |
| 8 | Connet Nut |
| 9 | O-ring |
| 10 | Cover Plate |
| 11 | Connector |
| 12 | Rubber Gasket |
| 13 | Plate |