

# MW03-FIN

## WALL MIXER FINISH KIT

# meir®

**MATTE BLACK**  
MW03-FIN

**CHROME**  
MW03-FIN-C

**CHAMPAGNE**  
MW03-FIN-CH

**TIGER  
BRONZE**  
MW03-FIN  
-BB

**BRUSHED  
NICKEL**  
MW03-FIN  
-PVDBN

**AVAILABLE  
FINISHES**



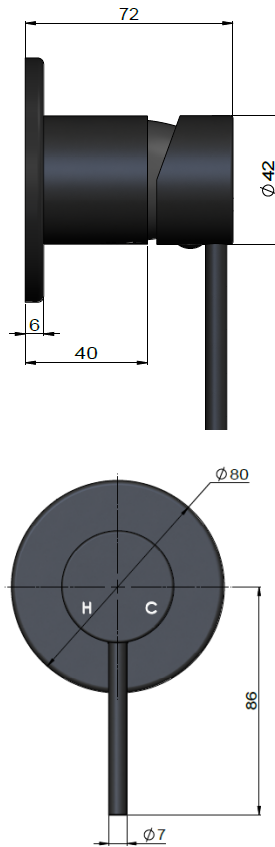
### FEATURES

- 10 Year warranty
- Flow rate 18L p/m
- European components and cartridge
- Reinforced rubber seal and lining
- Solid brass construction
- Box Weight 1 Kg

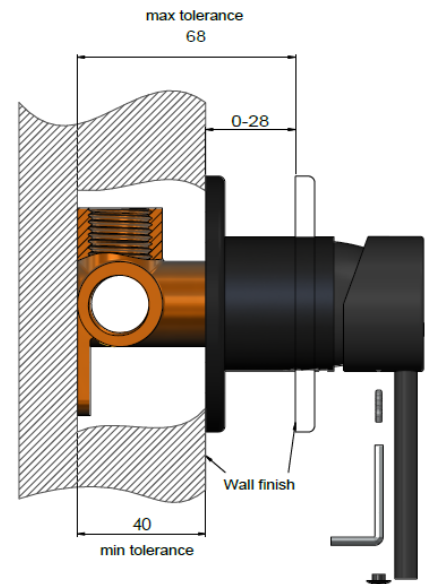
### CARE

- Do not install tapware using any form of acetone silicones.
- Do not apply physical items (such as tools) directly to product.
- Never use house-hold or commercial detergents, citrus based cleaners, or abrasive cleaners.
- Clean using a mild washing soap solution rinsed, and dry with a soft cloth.
- Check for any product defects before installation.
- Refer to the installation manual for correct installation.

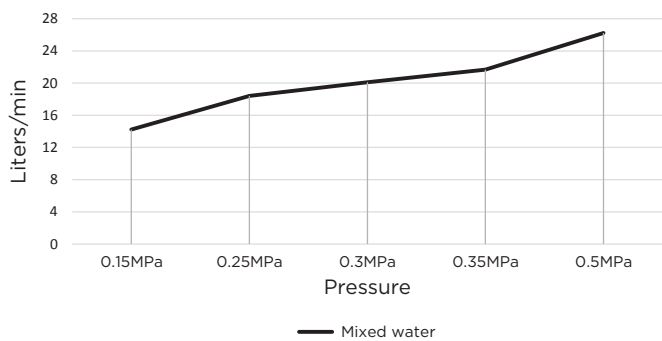
### SPECIFICATIONS



### TOLERANCES



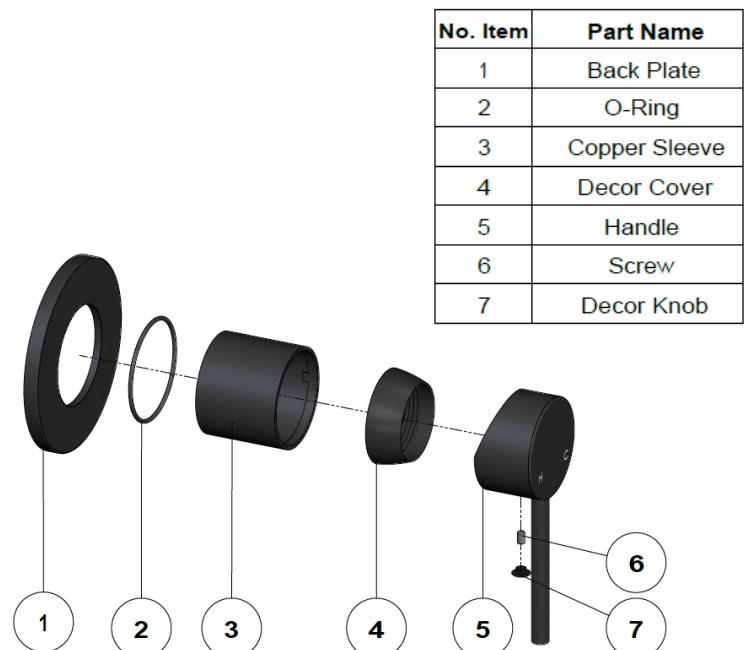
### FLOW RATE GRAPH



### CREDENTIALS

- Watermark AS/NZS 3718WMKA25013

### EXPLODED VIEW



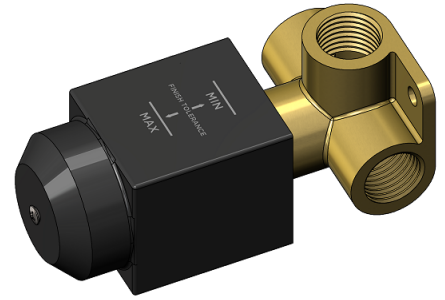
# MW13BDY

## WALL MIXER CONCEALED BODY

meir®

BRASS  
MW13BDY

AVAILABLE  
FINISHES



### FEATURES

- 10 Year warranty
- Flow rate 18L p/m
- European components and cartridge
- Reinforced rubber seal and lining
- Solid brass construction

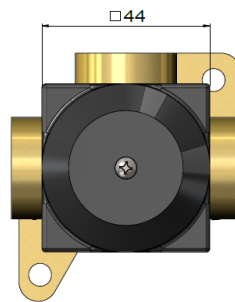
### CARE

- Do not install tapware using any form of acetone silicones.
- Do not apply physical items (such as tools) directly to product.
- Never use house-hold or commercial detergents, citrus based cleaners, or abrasive cleaners.
- Clean using a mild washing soap solution rinsed, and dry with a soft cloth.
- Check for any product defects before installation.
- Refer to the installation manual for correct installation.

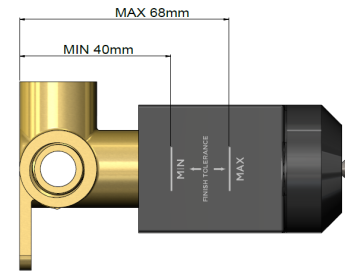
### SPECIFICATIONS



G1/2" Thread

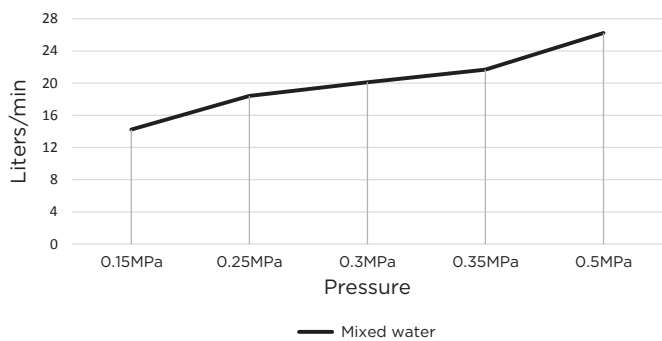


### TOLERANCES



WALL FINISH TOLERANCE

### FLOW RATE GRAPH



### CREDENTIALS

- Watermark AS/NZS 3718WMKA25013

### EXPLODED VIEW

