

# MA09-400 WALL SHOWER ARM



# meir®

MATTE BLACK  
MA09-400

CHROME  
MA09-400-C

CHAMPAGNE  
MA09-400  
-CH

TIGER  
BRONZE  
MA09-400  
-BB

BRUSHED  
NICKEL  
MA09-400  
-PVDBN

AVAILABLE  
FINISHES

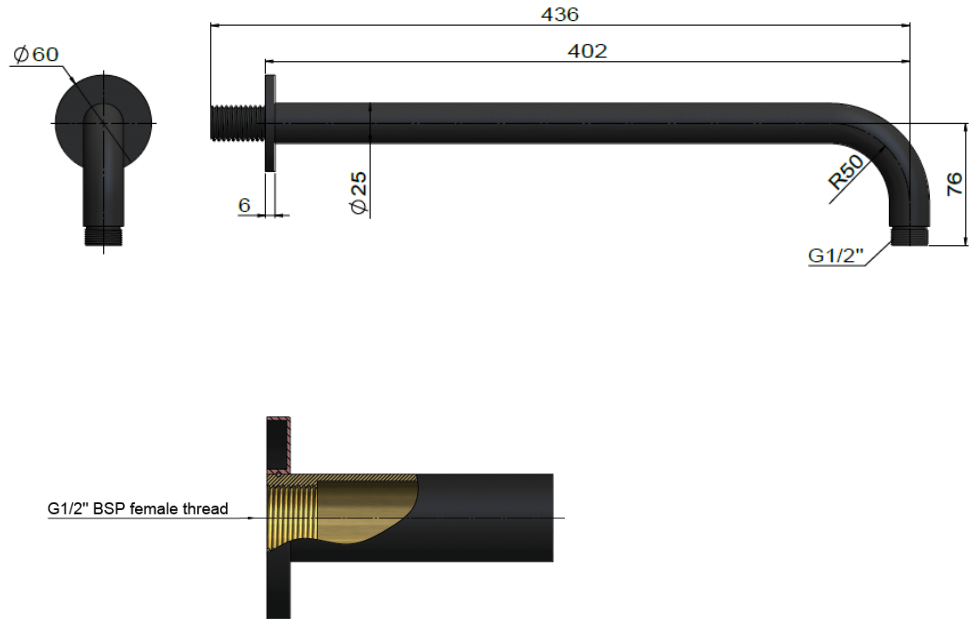
## FEATURES

- 10 Year warranty
- Solid brass construction
- Box Weight 0,6 kg
- 68mm long 1/2" threaded adapter included

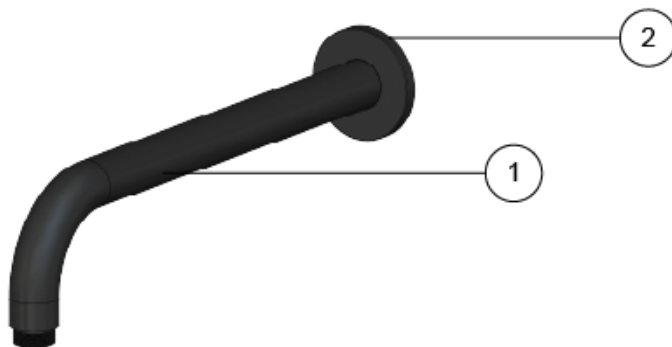
## CARE

- Do not install tapware using any form of acetone silicones.
- Do not apply physical items (such as tools) directly to product.
- Never use house-hold or commercial detergents, citrus based cleaners, or abrasive cleaners.
- Clean using a mild washing soap solution rinsed, and dry with a soft cloth.
- Check for any product defects before installation.
- Refer to the installation manual for correct installation.

## SPECIFICATIONS



## EXPLODED VIEW



NO.	Part Number
1	Ceiling arm
2	Cover plate

# MH04 SHOWER ROSE

# meir®

**MATTE BLACK**  
MH04

**CHROME**  
MH04-C

**CHAMPAGNE**  
MH04-CH

**TIGER  
BRONZE**  
MH04-BB

**BRUSHED  
NICKEL**  
MH04-PVDBN

**AVAILABLE  
FINISHES**



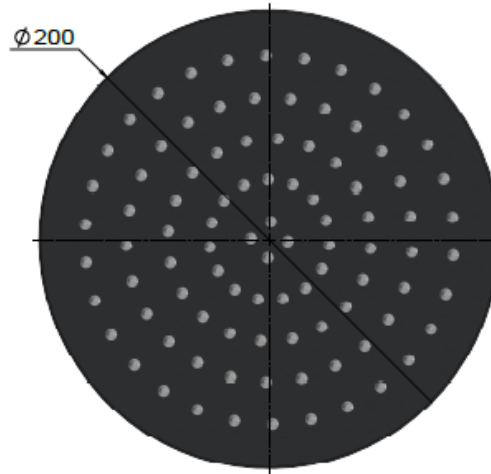
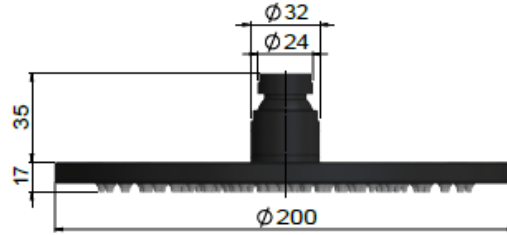
## FEATURES

- 10 Year warranty
- Flow rate 9L p/m
- Solid brass construction
- Box Weight 1.1 Kg

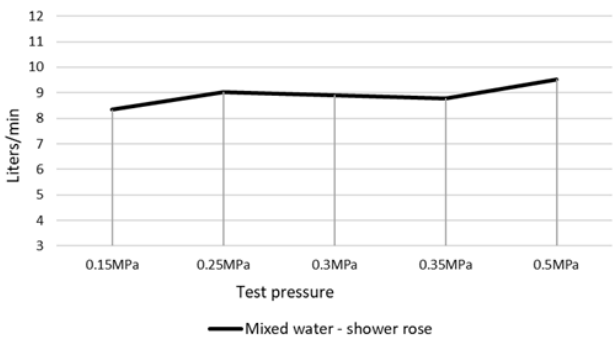
## CARE

- Do not install tapware using any form of acetone silicones.
- Do not apply physical items (such as tools) directly to product.
- Never use house-hold or commercial detergents, citrus based cleaners, or abrasive cleaners.
- Clean using a mild washing soap solution rinsed, and dry with a soft cloth.
- Check for any product defects before installation.
- Refer to the installation manual for correct installation.

## SPECIFICATIONS



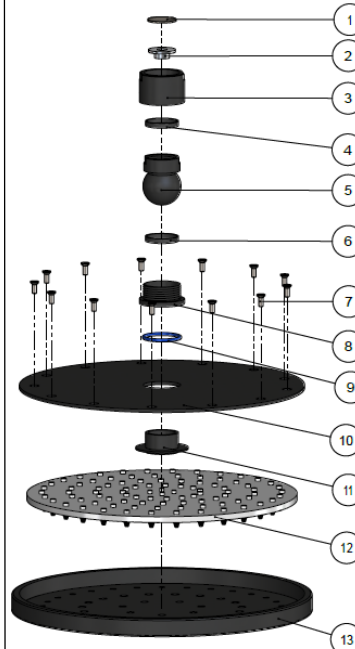
## FLOW RATE GRAPH



## CREDENTIALS

- Watermark AS/NZS3718WMKA25013
- Wels Rated 3 Star

## EXPLODED VIEW



No.	Part Name
1	Strainer
2	Flow Controller
3	Nut
4	Wearing Ring
5	Universal Ball
6	Wearing Ring
7	Screw
8	Connet Nut
9	O-ring
10	Cover Plate
11	Connector
12	Rubber Gasket
13	Plate

# MH05 SHOWER ROSE

# meir®

**MATTE BLACK**  
MH05

**CHROME**  
MH05-C

**CHAMPAGNE**  
MH05-CH

**TIGER  
BRONZE**  
MH05-BB

**BRUSHED  
NICKEL**  
MH05-PVDBN

**AVAILABLE  
FINISHES**



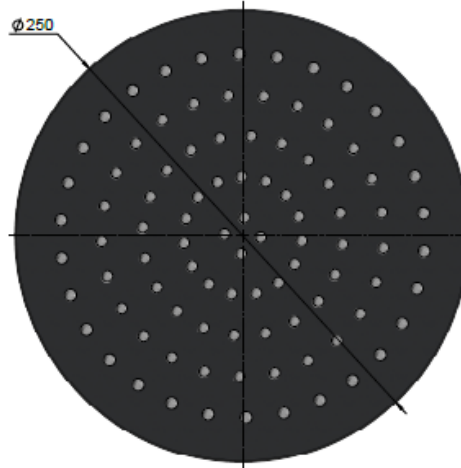
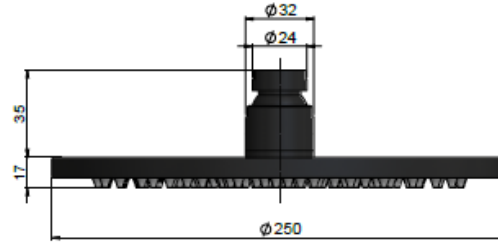
## FEATURES

- 10 Year warranty
- Flow rate 9L p/m
- Solid brass construction
- Box Weight 1.4 Kg

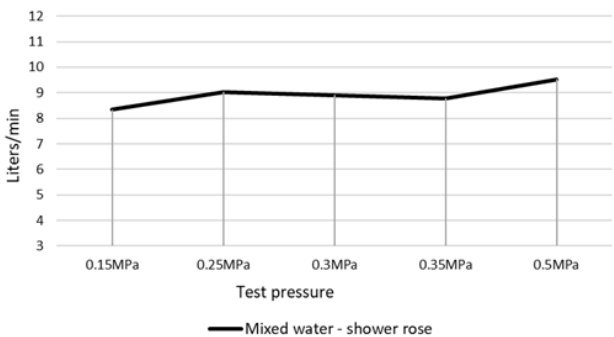
## CARE

- Do not install tapware using any form of acetone silicones.
- Do not apply physical items (such as tools) directly to product.
- Never use house-hold or commercial detergents, citrus based cleaners, or abrasive cleaners.
- Clean using a mild washing soap solution rinsed, and dry with a soft cloth.
- Check for any product defects before installation.
- Refer to the installation manual for correct installation.

## SPECIFICATIONS



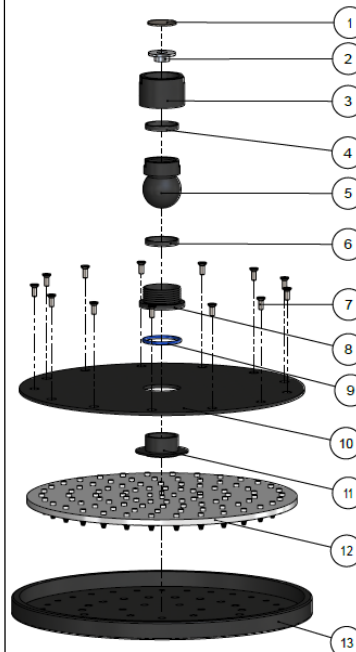
## FLOW RATE GRAPH



## CREDENTIALS

- Watermark AS/NZS3718WMKA25013
- Wels Rated 3 Star

## EXPLODED VIEW



No.	Part Name
1	Strainer
2	Flow Controller
3	Nut
4	Wearing Ring
5	Universal Ball
6	Wearing Ring
7	Screw
8	Connet Nut
9	O-ring
10	Cover Plate
11	Connector
12	Rubber Gasket
13	Plate

# MH06

## SHOWER ROSE

# meir®

**MATTE BLACK**  
MH06

**CHROME**  
MH06-C

**CHAMPAGNE**  
MH06-CH

**TIGER  
BRONZE**  
MH06-BB

**BRUSHED  
NICKEL**  
MH06-PVDBN

**AVAILABLE  
FINISHES**



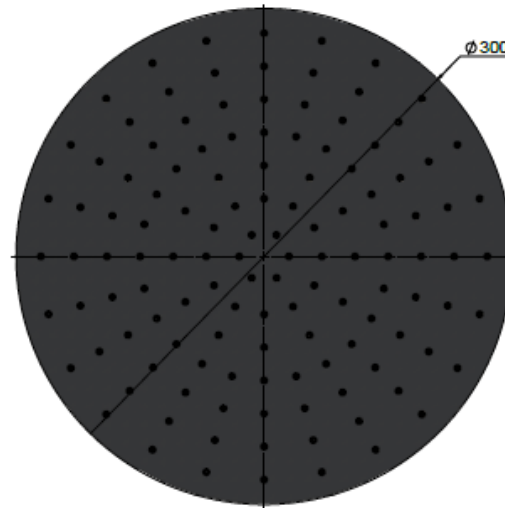
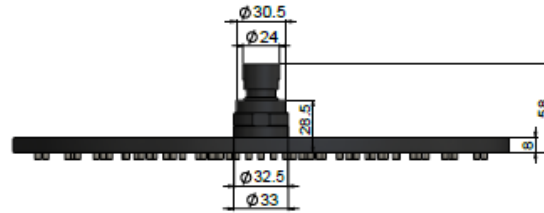
### FEATURES

- 10 Year warranty
- Flow rate 9L p/m
- Solid Brass construction
- Box Weight 2.0 Kg

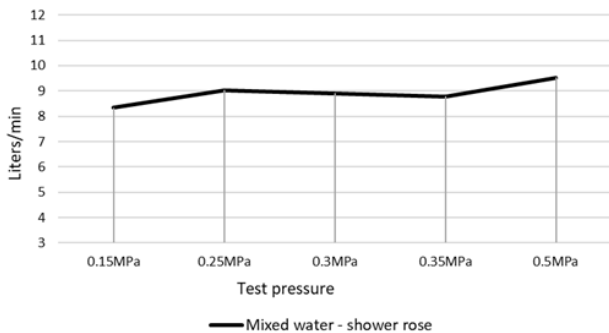
### CARE

- Do not install tapware using any form of acetone silicones.
- Do not apply physical items (such as tools) directly to product.
- Never use house-hold or commercial detergents, citrus based cleaners, or abrasive cleaners.
- Clean using a mild washing soap solution rinsed, and dry with a soft cloth.
- Check for any product defects before installation.
- Refer to the installation manual for correct installation.

### SPECIFICATIONS



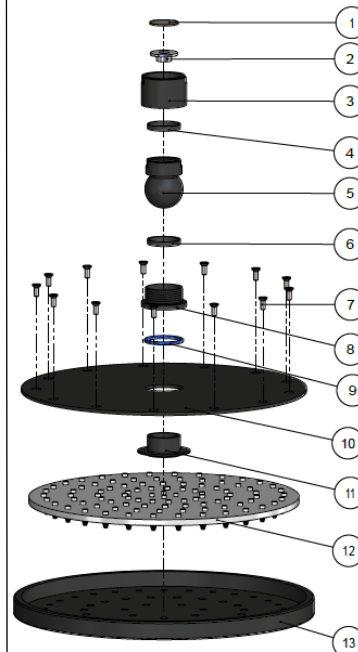
### FLOW RATE GRAPH



### CREDENTIALS

- Watermark AS/NZS3718WMKA25013
- Wels Rated 3 Star

### EXPLODED VIEW



No.	Part Name
1	Strainer
2	Flow Controller
3	Nut
4	Wearing Ring
5	Universal Ball
6	Wearing Ring
7	Screw
8	Connet Nut
9	O-ring
10	Cover Plate
11	Connector
12	Rubber Gasket
13	Plate