

# MS01

## SQUARE BATH SPOUT

meir®

MATTE BLACK  
MS01

CHROME  
MS01-C

AVAILABLE  
FINISHES



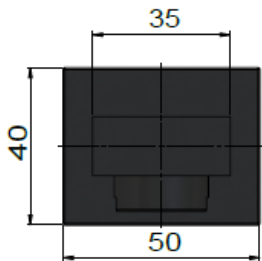
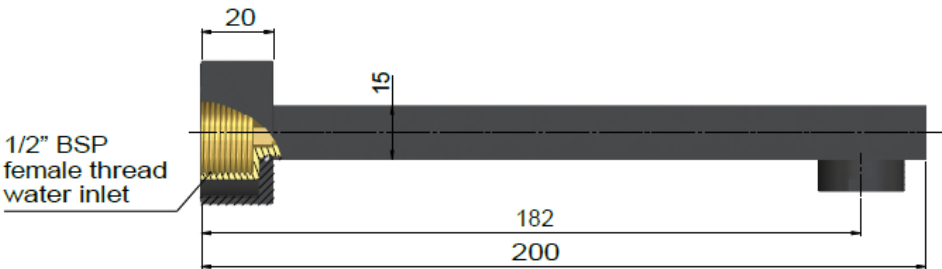
### FEATURES

- 10 Year warranty
- Flow rate **22L p/m**
- European components and cartridge
- Solid brass construction
- Box Weight **0.9kg**
- 68mm long 1/2" threaded adapter included

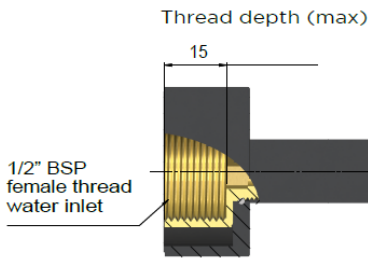
### CARE

- Do not install tapware using any form of acetone silicones.
- Do not apply physical items (such as tools) directly to product.
- Never use house-hold or commercial detergents, citrus based cleaners, or abrasive cleaners.
- Clean using a mild washing soap solution rinsed, and dry with a soft cloth.
- Check for any product defects before installation.
- Refer to the installation manual for correct installation.

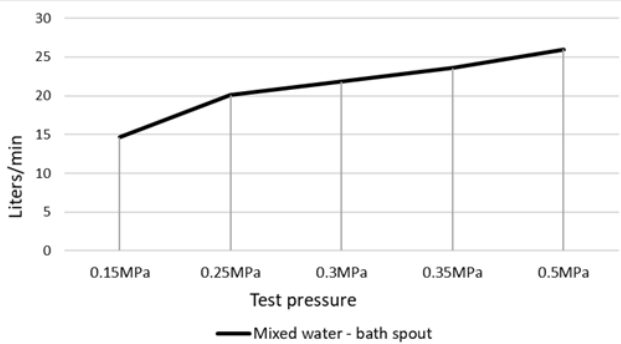
### SPECIFICATIONS



#### TOLERANCE



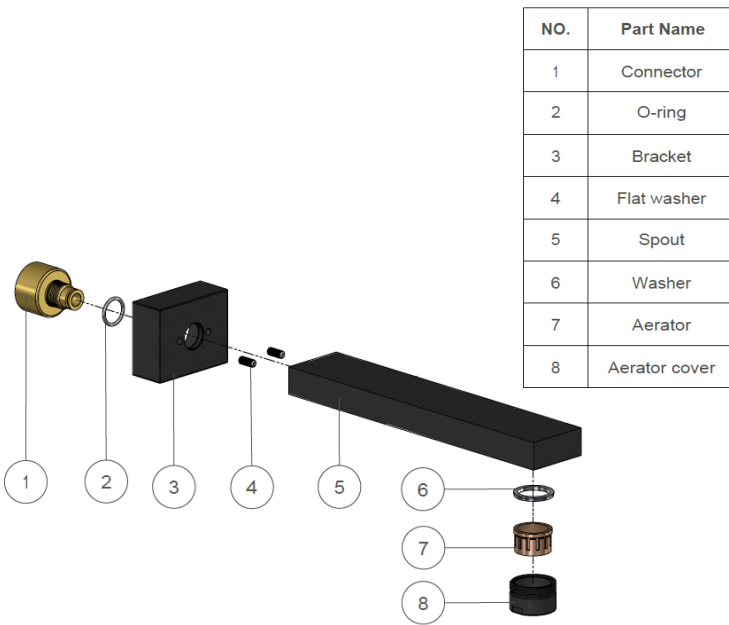
### FLOW RATE GRAPH



### CREDENTIALS

- Watermark AS/NZS3718WMKA25013

### EXPLODED VIEW



# MW01 WALL MIXER

meir®

MATTE BLACK  
MW01

AVAILABLE  
FINISH

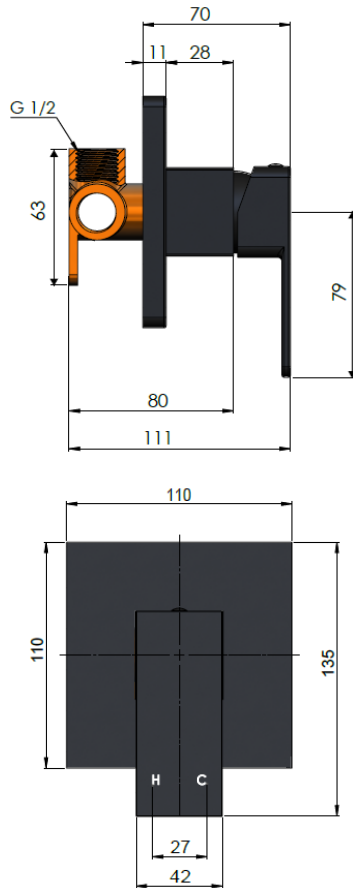
## FEATURES

- 10 Year warranty
- Flow rate 18L p/m
- European components and cartridge
- Reinforced rubber seal and lining
- Solid brass construction
- Box Weight 1.36 Kg

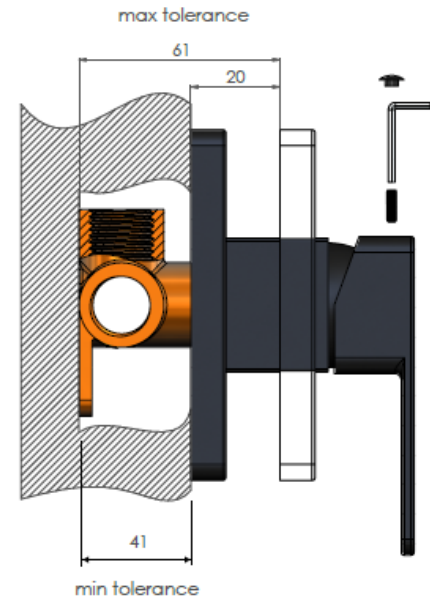
## CARE

- Do not install tapware using any form of acetone silicones.
- Do not apply physical items (such as tools) directly to product.
- Never use house-hold or commercial detergents, citrus based cleaners, or abrasive cleaners.
- Clean using a mild washing soap solution rinsed, and dry with a soft cloth.
- Check for any product defects before installation.
- Refer to the installation manual for correct installation.

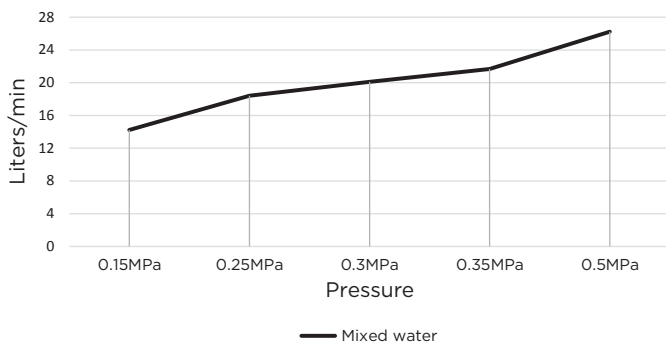
## SPECIFICATIONS



## TOLERANCES

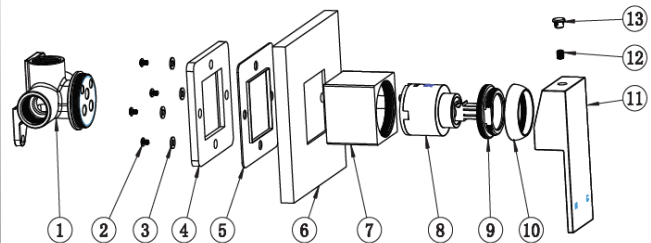


## FLOW RATE GRAPH



## CREDENTIALS

- WaterMark AS/NZS3718WMKA25013



- 1 Body
- 2 Screw
- 3 Gasket
- 4 Rubber ring
- 5 Rubber ring
- 6 Back plate
- 7 Copper sleeve
- 8 D35 cartridge
- 9 Nut
- 10 Decor cover
- 11 Handle
- 12 Screw
- 13 Decor knob