

MS05-130

WALL SPOUT

meir®



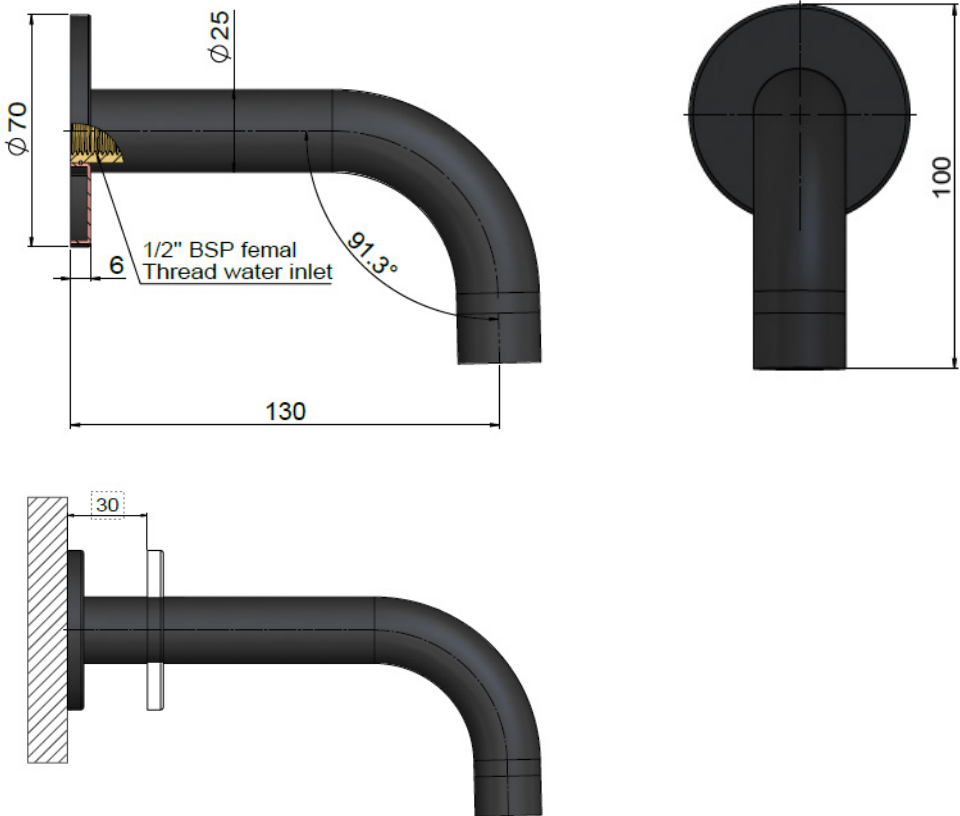
FEATURES

- Refer to the Meir website for warranty terms & conditions, and available finishes.
- Flow rate 5 L/m & 25 L/m at 3 bar pressure.
- European aerators, basin and bath
- Solid brass construction
- Box Weight 0.37 kg
- 68mm long 1/2" threaded adapter included

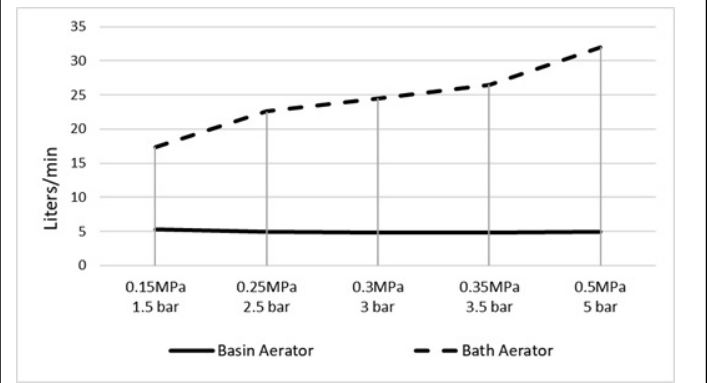
CARE

- Do not install tapware using any form of acetone silicones.
- Do not apply physical items (such as tools) directly to product.
- Never use house-hold or commercial detergents, citrus based cleaners, or abrasive cleaners.
- Clean using a mild washing soap solution rinsed, and dry with a soft cloth.
- Check for any product defects before installation.
- Refer to the installation manual for correct installation.

SPECIFICATIONS



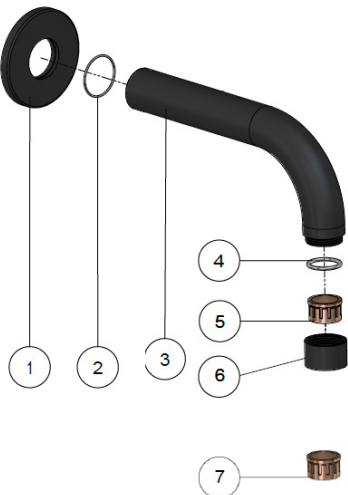
FLOW RATE GRAPH



CREDENTIALS

- Watermark AS/NZS3718WMKA25013
- 5-star WELS rated
- 5 litres p/minute
- WELS registration No: T38005

EXPLODED VIEW



NO.	Part
1	Back plate
2	O-ring
3	Basin Spout
4	O-ring
5	Aerator
6	Aerator Case
7	Bath Aerator

MS05 WALL SPOUT

meir®



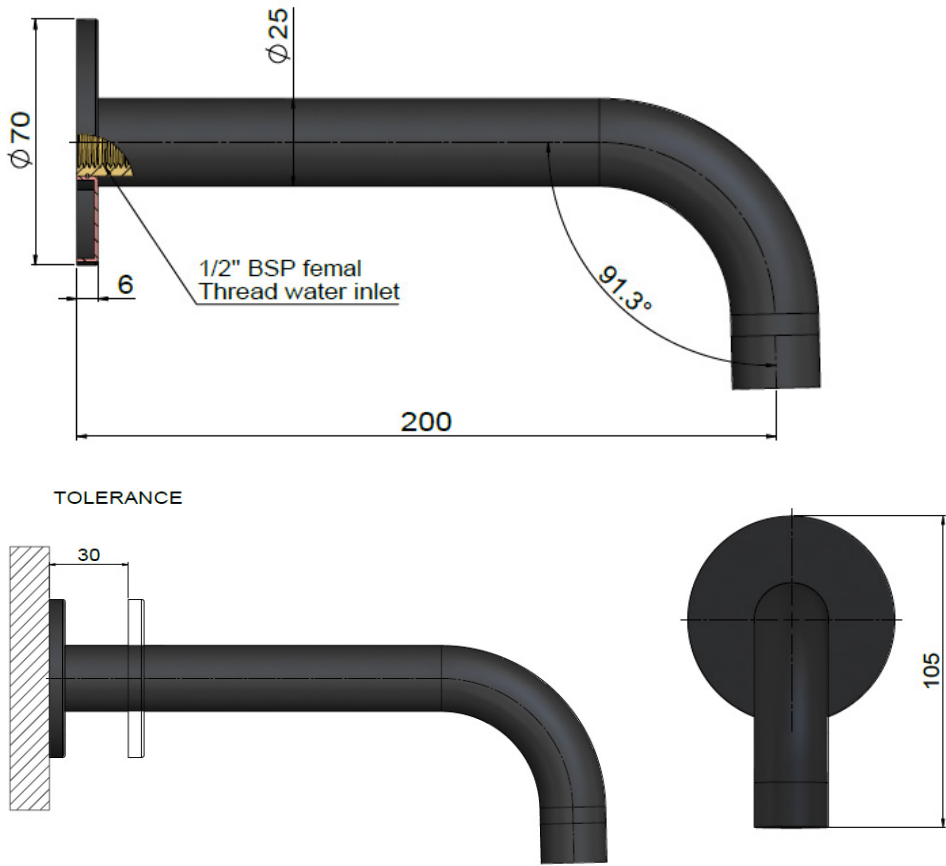
FEATURES

- Refer to the Meir website for warranty terms & conditions, and available finishes.
- Flow rate 5 L/m & 25 L/m at 3 bar pressure.
- European aerators, basin and bath
- Solid brass construction
- Box Weight 0.37 kg
- 68mm long 1/2" threaded adapter included

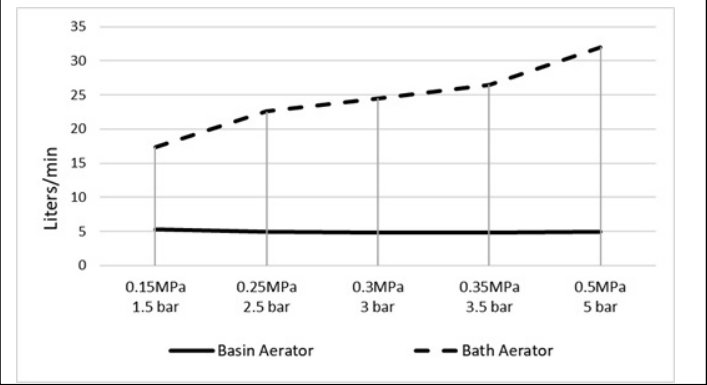
CARE

- Do not install tapware using any form of acetone silicones.
- Do not apply physical items (such as tools) directly to product.
- Never use house-hold or commercial detergents, citrus based cleaners, or abrasive cleaners.
- Clean using a mild washing soap solution rinsed, and dry with a soft cloth.
- Check for any product defects before installation.
- Refer to the installation manual for correct installation.

SPECIFICATIONS



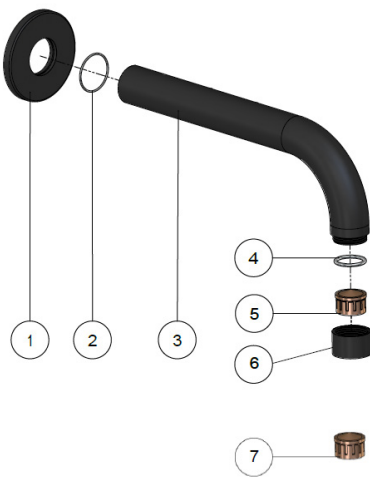
FLOW RATE GRAPH



CREDENTIALS

- Watermark AS/NZS3718WMKA25013
- 5-star WELS rated
- 5.5 litres p/minute
- WELS registration No: T33048

EXPLODED VIEW



NO.	Part
1	Back plate
2	O-ring
3	Basin Spout
4	O-ring
5	Aerator
6	Aerator Case
7	Bath Aerator

MW03-FIN

WALL MIXER FINISH KIT

meir®

HANDLE VARIANTS



Paddle:MW03PD-FIN Paddle:MW03PN-FIN

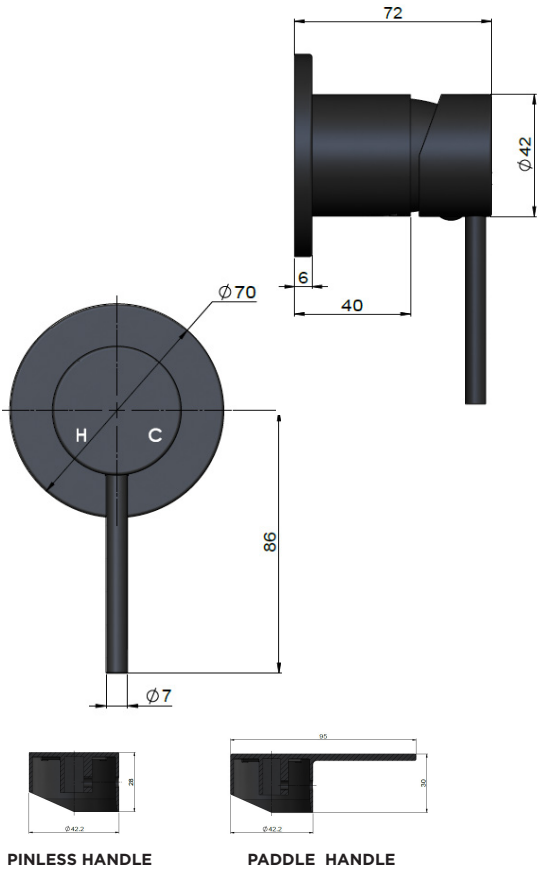
FEATURES

- Refer to the Meir website for warranty terms & conditions, and available finishes
- Flow rate 18L p/m at 3 bar pressure.
- European components and cartridge
- Reinforced rubber seal and lining
- Solid brass construction
- used in conjunction with the MW13BDY in wall body.

CARE

- Do not install tapware using any form of acetone silicones.
- Do not apply physical items (such as tools) directly to product.
- Never use house-hold or commercial detergents, citrus based cleaners, or abrasive cleaners.
- Clean using a mild washing soap solution rinsed, and dry with a soft cloth.
- Check for any product defects before installation.
- Refer to the installation manual for correct installation.

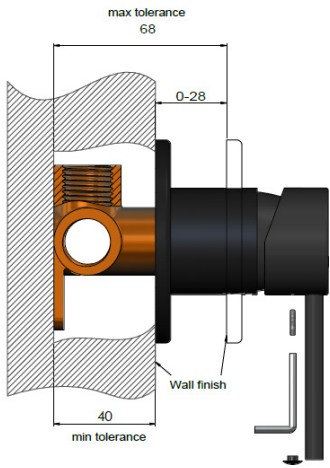
SPECIFICATIONS



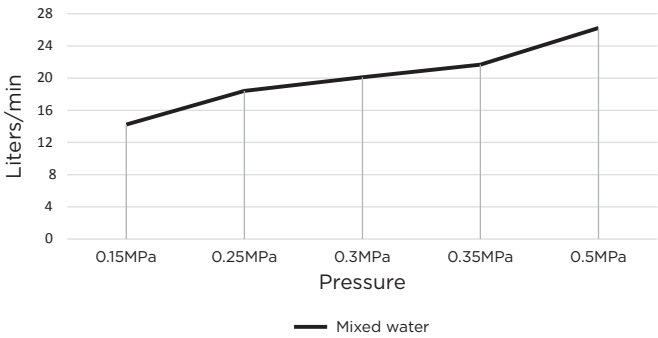
PINLESS HANDLE

PADDLE HANDLE

TOLERANCES



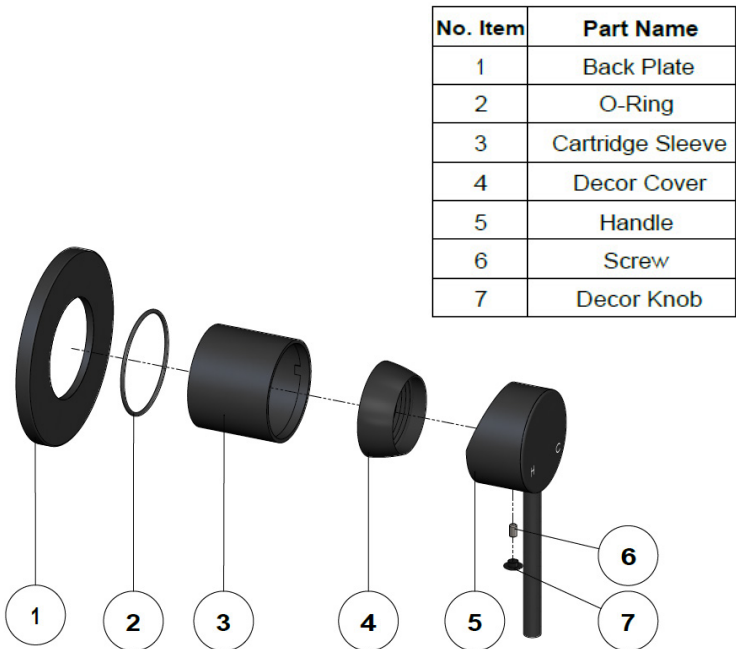
FLOW RATE GRAPH



CREDENTIALS

- Watermark AS/NZS 3718WMKA25013

EXPLODED VIEW



MW03S-FIN

WALL MIXER TRIM KIT

meir®



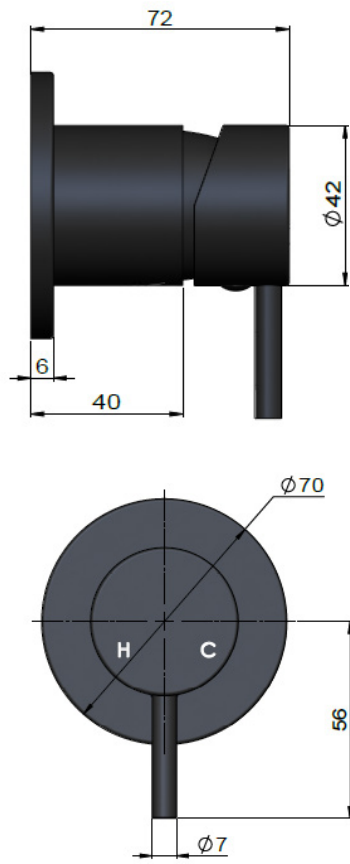
FEATURES

- Refer to the Meir website for warranty terms & conditions, and available finishes
- European components and cartridge
- Reinforced rubber seal and lining
- Solid brass construction
- Box Weight 1 Kg
- Flow rate 18L p/m at 3 bar pressure.

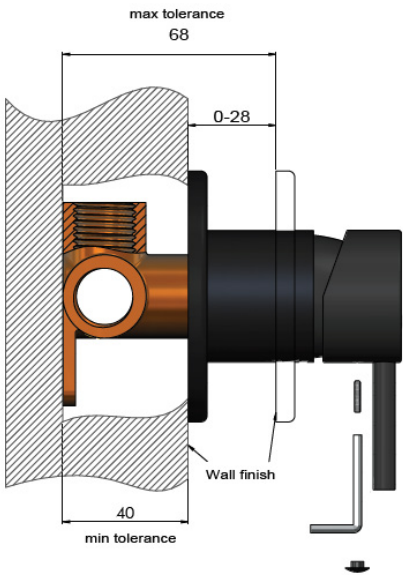
CARE

- Do not install tapware using any form of acetone silicones.
- Do not apply physical items (such as tools) directly to product.
- Never use house-hold or commercial detergents, citrus based cleaners, or abrasive cleaners.
- Clean using a mild washing soap solution rinsed, and dry with a soft cloth.
- Check for any product defects before installation.
- Refer to the installation manual for correct installation.

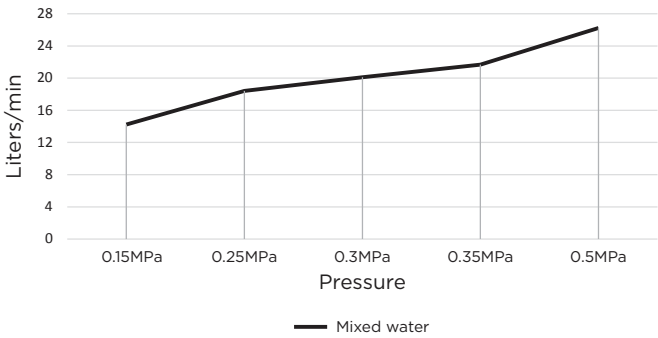
SPECIFICATIONS



TOLERANCES



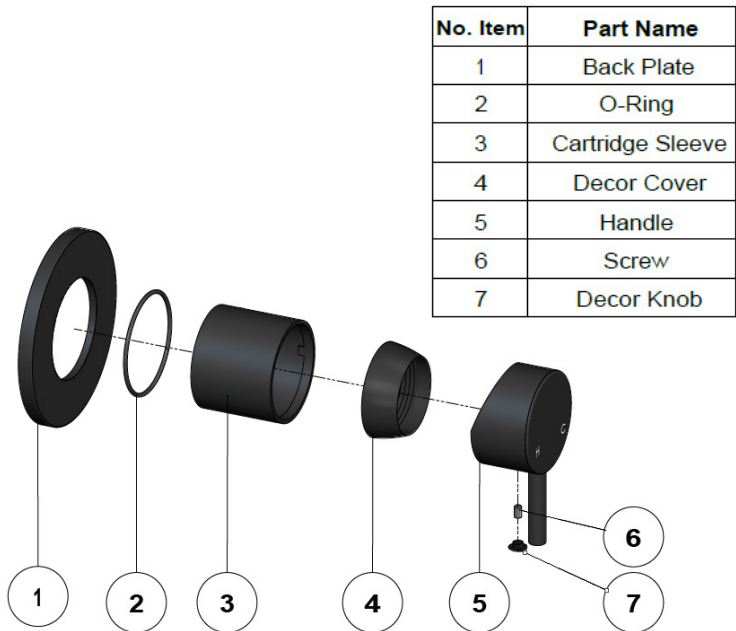
FLOW RATE GRAPH



CREDENTIALS

- Watermark AS/NZS 3718WMKA25013

EXPLODED VIEW



MZ06-R

HAND SHOWER

meir.®



FEATURES

- Refer to the Meir website for warranty terms & conditions, and available finishes
- Flow rate **8 L p/m** at 3 bar pressure.
- Solid brass construction
- Box Weight 1.06 kg
- 68mm long 1/2" threaded adapter included for non-AU regions only

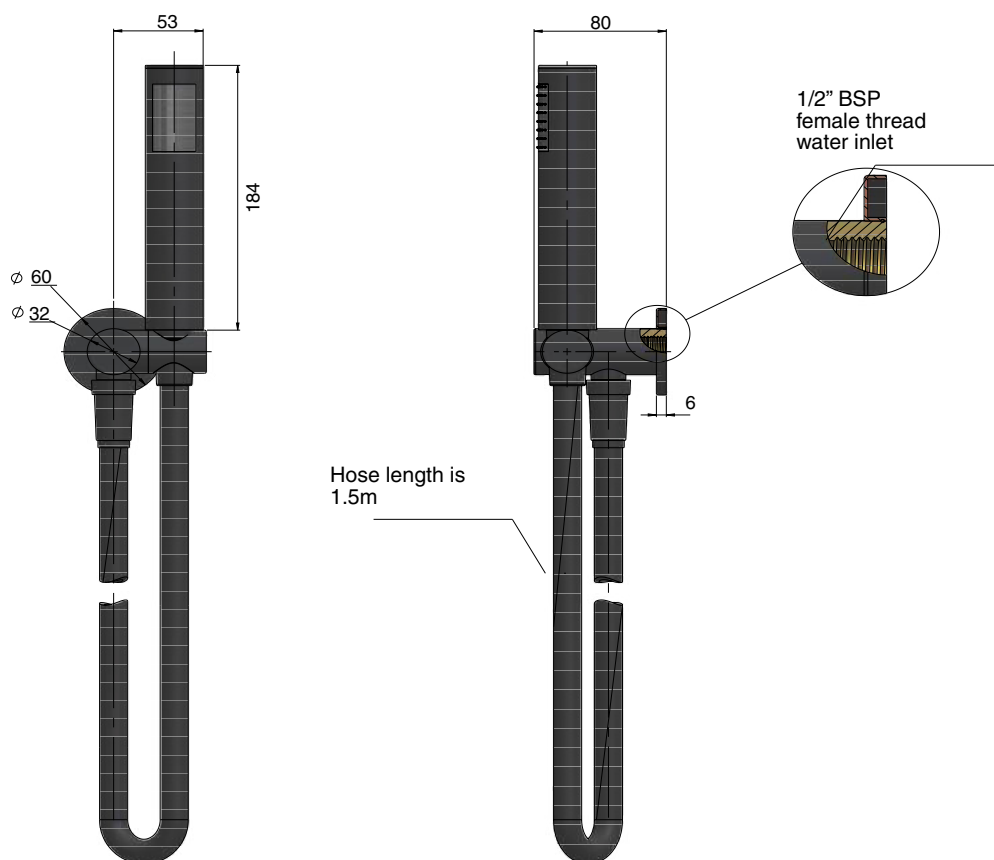
CARE

- Do not install tapware using any form of acetone silicones.
- Do not apply physical items (such as tools) directly to product.
- Never use house-hold or commercial detergents, citrus based cleaners, or abrasive cleaners.
- Clean using a mild washing soap solution rinsed, and dry with a soft cloth.
- Check for any product defects before installation.
- Refer to the installation manual for correct installation.

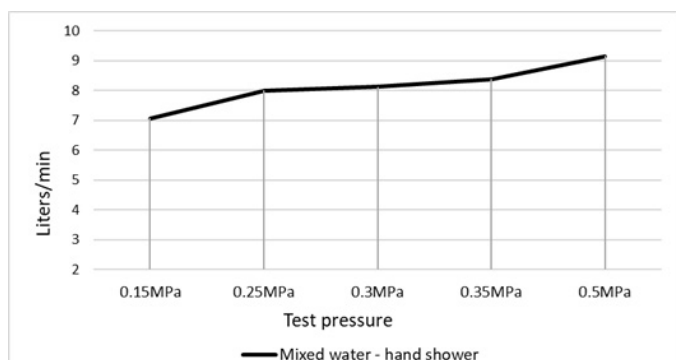
CREDENTIALS

- Watermark AS/NZS3718WMKA25013
- 3-star WELS rated
- 9 litres p/minute
- WELS registration No: S16889

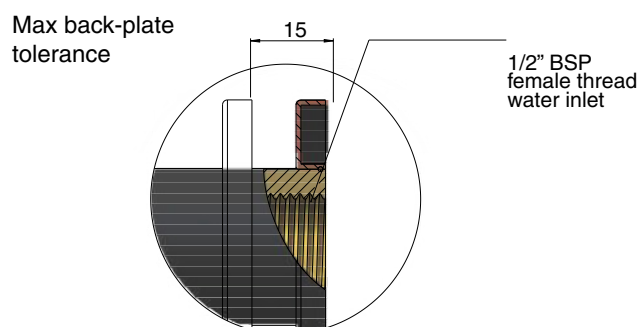
SPECIFICATIONS



FLOW RATE GRAPH



TOLERANCES



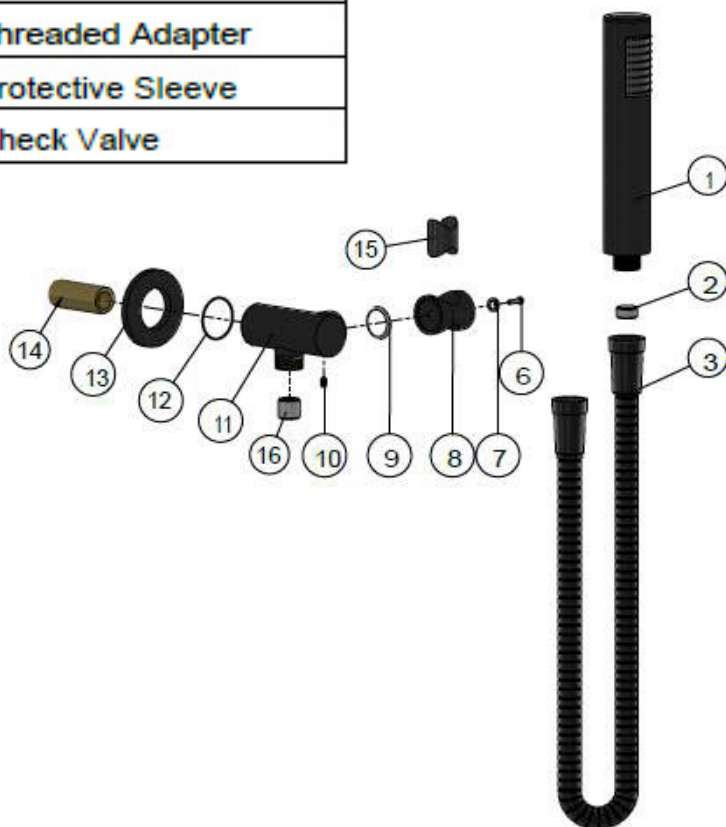
MZ06-R

HAND SHOWER

meir®

EXPLODED VIEW

NO.	Part Number
1	Handle Shower
2	Water Flow Controller
3	Shower Hose
6	Screw
7	Wear Ring
8	Bracket
9	Wear Ring
10	Screw
11	Bracket Base
12	O-Ring
13	Back Plate
14	Threaded Adapter
15	Protective Sleeve
16	Check Valve



NOTE: The hose end caps of part (3) are made from a special hardened plastic to prevent the brass mount (8) from scratching.

MP01S-B 3 FUNCTION HAND SHOWER

meir®

FEATURES

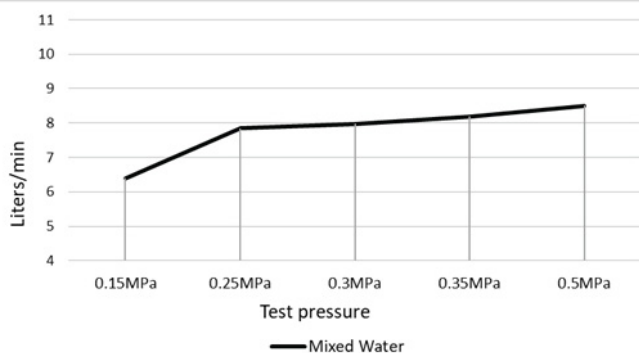
- Refer to the Meir website for warranty terms & conditions.
- Flow rate 8 L/min at 3 bar
- 3 spray functions
- ABS plastic construction
- Refer to the website for available finish colours.

CARE

- Do not install tapware using any form of acetone silicones.
- Do not apply physical items (such as tools) directly to the product.
- Never use house-hold or commercial detergents, citrus based cleaners, or abrasive cleaners.
- Clean using a mild washing soap solution. Rinse and dry with a soft cloth.
- Check for any product defects before installation.
- Refer to the Installation Manual for correct installation.



FLOW RATE GRAPH



CREDENTIALS

- Watermark AS/NZS3718WMK268624
- 3-star WELS rated
- 9 litres p/minute
- WELS registration No: S17650

MW13BDY

WALL MIXER CONCEALED BODY

meir®



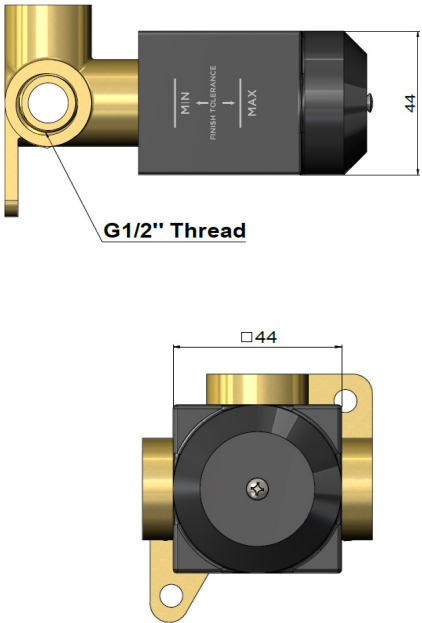
FEATURES

- Refer to the Meir website for warranty terms & conditions, and available finishes
- Flow rate 18L p/m at 3 bar pressure.
- European components and cartridge
- Solid brass construction

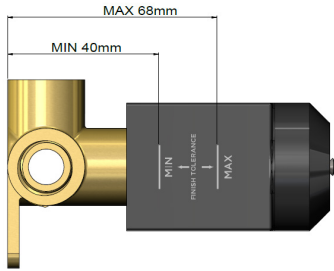
CARE

- Do not install tapware using any form of acetone silicones.
- Do not apply physical items (such as tools) directly to product.
- Never use house-hold or commercial detergents, citrus based cleaners, or abrasive cleaners.
- Clean using a mild washing soap solution rinsed, and dry with a soft cloth.
- Check for any product defects before installation.
- Refer to the installation manual for correct installation.

SPECIFICATIONS

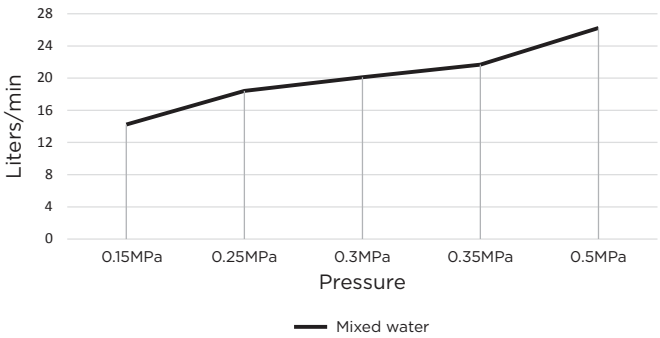


TOLERANCES



WALL FINISH TOLERANCE

FLOW RATE GRAPH



CREDENTIALS

- Watermark AS/NZS 3718WMKA25013

EXPLODED VIEW

