

# MA07-150

## CEILING SHOWER ARM

meir®

MATTE BLACK  
MA07-150

CHROME  
MA07-150-C

CHAMPAGNE  
MA07-150-CH

TIGER  
BRONZE  
MA07-150-BB

BRUSHED  
NICKEL  
MA07-150  
-PVDBN

AVAILABLE  
FINISHES



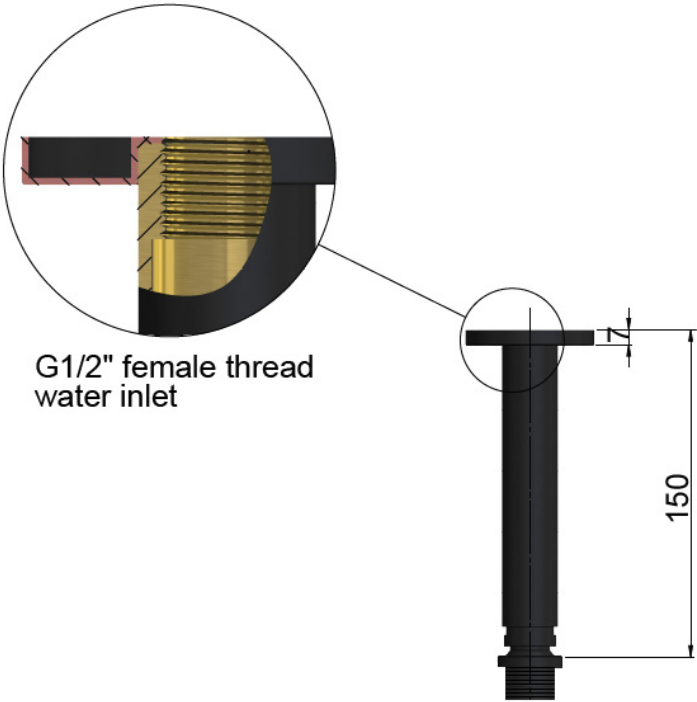
### FEATURES

- 10 Year warranty
- Solid brass construction
- Box Weight 0.5kg
- 68mm long 1/2" threaded adapter included

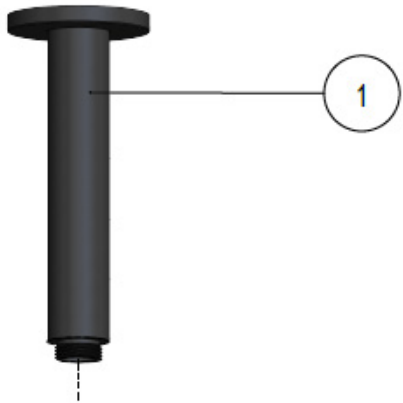
### CARE

- Do not install tapware using any form of acetone silicones.
- Do not apply physical items (such as tools) directly to product.
- Never use house-hold or commercial detergents, citrus based cleaners, or abrasive cleaners.
- Clean using a mild washing soap solution rinsed, and dry with a soft cloth.
- Check for any product defects before installation.
- Refer to the installation manual for correct installation.

### SPECIFICATIONS



### EXPLODED VIEW



No.	Part Name
1	Ceiling Arm



# MA07-300

## CEILING SHOWER ARM

meir®

MATTE BLACK  
MA07-300

CHROME  
MA07-300-C

CHAMPAGNE  
MA07-300-CH

TIGER  
BRONZE  
MA07-300-BB

BRUSHED  
NICKEL  
MA07-300  
-PVDBN

### AVAILABLE FINISHES



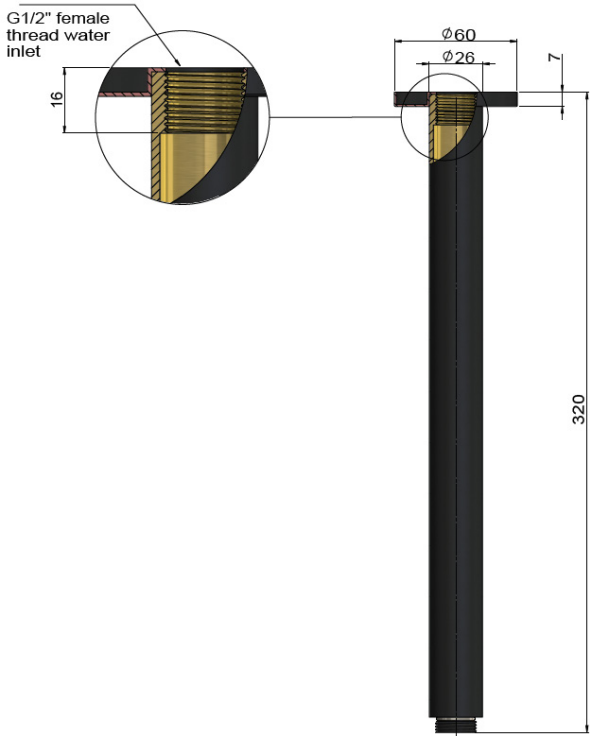
### FEATURES

- 10 Year warranty
- Solid brass construction
- Box Weight 0.6kg
- 68mm long 1/2" threaded adapter included

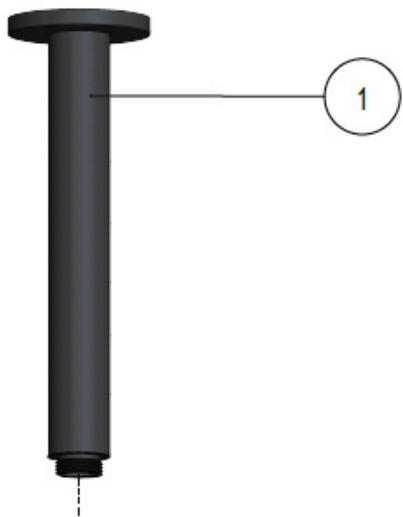
### CARE

- Do not install tapware using any form of acetone silicones.
- Do not apply physical items (such as tools) directly to product.
- Never use house-hold or commercial detergents, citrus based cleaners, or abrasive cleaners.
- Clean using a mild washing soap solution rinsed, and dry with a soft cloth.
- Check for any product defects before installation.
- Refer to the installation manual for correct installation.

### SPECIFICATIONS



### EXPLODED VIEW



No.	Part Name
1	Ceiling Arm



# MH04

## SHOWER ROSE

meir®

MATTE  
BLACKMATTE  
BLACK MH04

CHROME  
MH04-C

CHAMPAGNE  
MH04-CH

TIGER  
BRONZE  
MH04-BB

BRUSHED  
NICKEL  
MH04-PVDBN

### AVAILABLE FINISHES

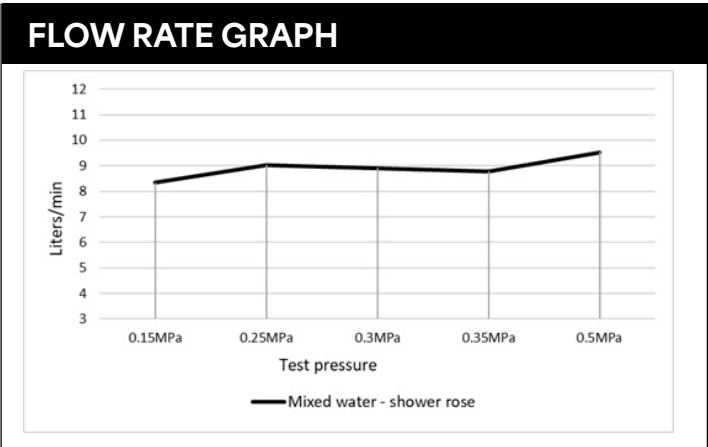
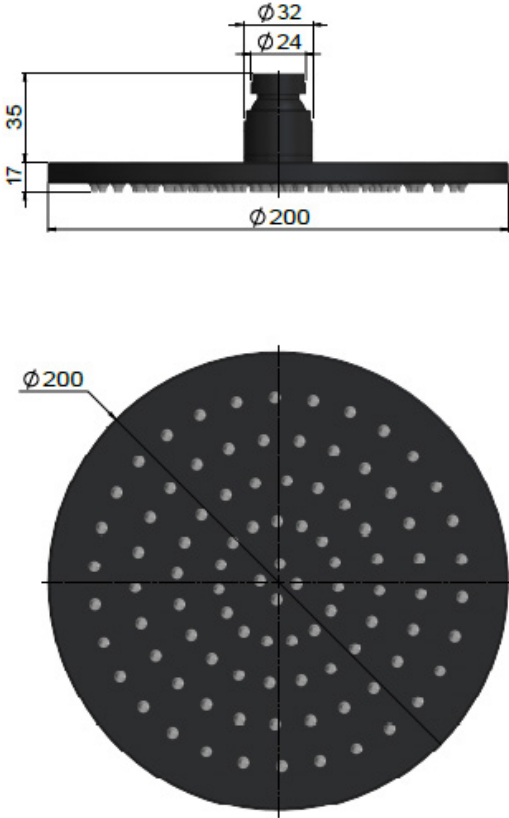
FEATURES

- 10 Year warranty
- Flow rate 9L p/m
- Solid brass construction
- Box Weight 1.1 Kg

CARE

- Do not install tapware using any form of acetone silicones.
- Do not apply physical items (such as tools) directly to product.
- Never use house-hold or commercial detergents, citrus based cleaners, or abrasive cleaners.
- Clean using a mild washing soap solution rinsed, and dry with a soft cloth.
- Check for any product defects before installation.
- Refer to the installation manual for correct installation.

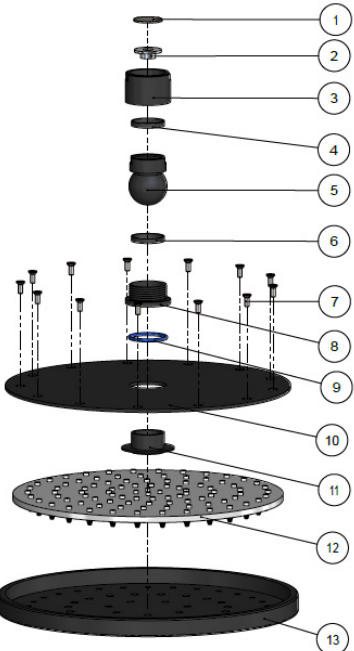
SPECIFICATIONS



CREDENTIALS

- Watermark AS/NZS3718WMKA25013
- Wels Rated 3 Star

EXPLODED VIEW



No.	Part Name
1	Strainer
2	Flow Controller
3	Nut
4	Wearing Ring
5	Universal Ball
6	Wearing Ring
7	Screw
8	Connet Nut
9	O-ring
10	Cover Plate
11	Connector
12	Rubber Gasket
13	Plate



# MH05

## SHOWER ROSE

meir®

MATTE  
BLACKMATTE  
BLACK MH05

CHROME  
MH05-C

CHAMPAGNE  
MH05-CH

TIGER  
BRONZE  
MH05-BB

BRUSHED  
NICKEL  
MH05-PVDBN

### AVAILABLE FINISHES

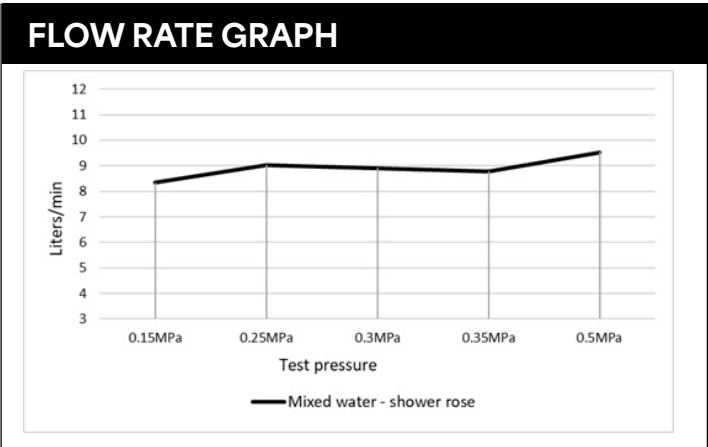
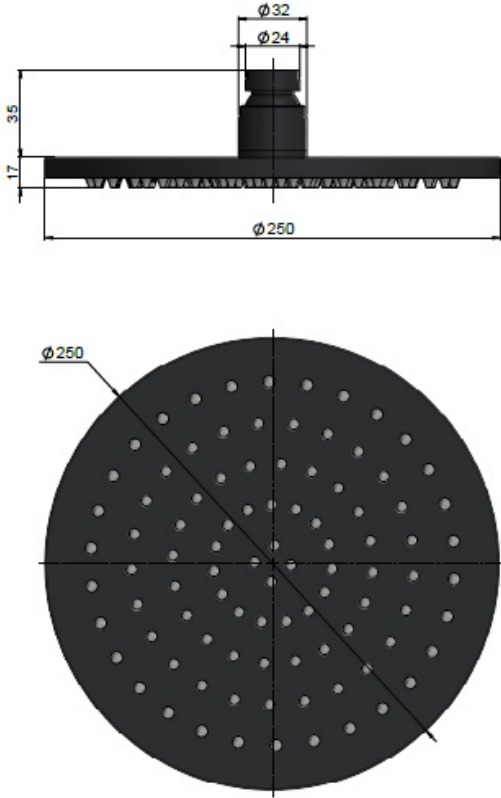
FEATURES

- 10 Year warranty
- Flow rate 9L p/m
- Solid brass construction
- Box Weight 1.4 Kg

CARE

- Do not install tapware using any form of acetone silicones.
- Do not apply physical items (such as tools) directly to product.
- Never use house-hold or commercial detergents, citrus based cleaners, or abrasive cleaners.
- Clean using a mild washing soap solution rinsed, and dry with a soft cloth.
- Check for any product defects before installation.
- Refer to the installation manual for correct installation.

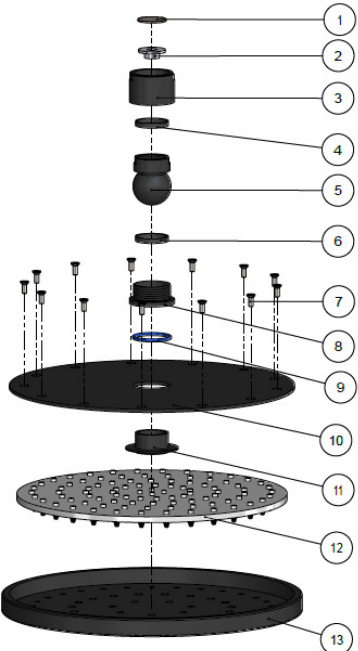
SPECIFICATIONS



CREDENTIALS

- Watermark AS/NZS3718WMKA25013
- Wels Rated 3 Star

EXPLODED VIEW



No.	Part Name
1	Strainer
2	Flow Controller
3	Nut
4	Wearing Ring
5	Universal Ball
6	Wearing Ring
7	Screw
8	Connet Nut
9	O-ring
10	Cover Plate
11	Connector
12	Rubber Gasket
13	Plate



# MH06

## SHOWER ROSE

meir®

MATTE  
BLACKMATTE  
BLACK MH06

CHROME  
MH06-C

CHAMPAGNE  
MH06-CH

TIGER  
BRONZE  
MH06-BB

BRUSHED  
NICKEL  
MH06-PVDBN

### AVAILABLE FINISHES

FEATURES

- 10 Year warranty
- Flow rate 9L p/m
- Solid Brass construction
- Box Weight 2.0 Kg

CARE

- Do not install tapware using any form of acetone silicones.
- Do not apply physical items (such as tools) directly to product.
- Never use house-hold or commercial detergents, citrus based cleaners, or abrasive cleaners.
- Clean using a mild washing soap solution rinsed, and dry with a soft cloth.
- Check for any product defects before installation.
- Refer to the installation manual for correct installation.

SPECIFICATIONS

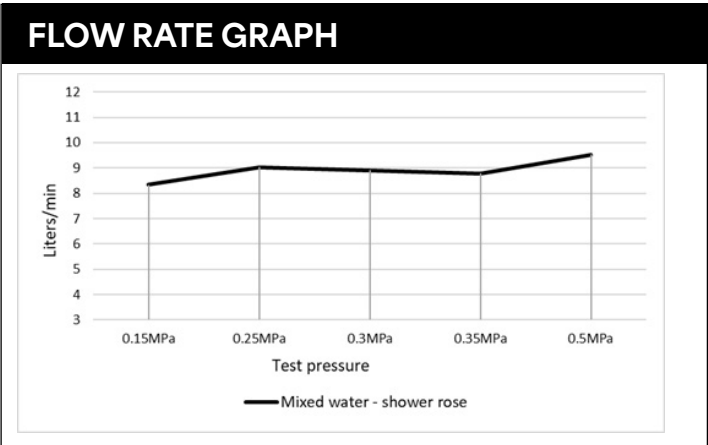
Technical drawing of the shower rose showing side and top views with dimensions.

Side View Dimensions:

- Top diameter:  $\varnothing 30.5$
- Inner diameter:  $\varnothing 24$
- Mounting hole diameter:  $\varnothing 32.5$
- Bottom diameter:  $\varnothing 33$
- Mounting hole offset: 28.5
- Mounting hole depth: 5.8

Top View Dimensions:

- Overall diameter:  $\varnothing 300$



CREDENTIALS

- Watermark AS/NZS3718WMKA25013
- Wels Rated 3 Star

EXPLODED VIEW

Exploded view diagram of the shower rose assembly with numbered parts.

No.	Part Name
1	Strainer
2	Flow Controller
3	Nut
4	Wearing Ring
5	Universal Ball
6	Wearing Ring
7	Screw
8	Connet Nut
9	O-ring
10	Cover Plate
11	Connector
12	Rubber Gasket
13	Plate



# MW03S-FIN

## WALL MIXER TRIM KIT

meir®



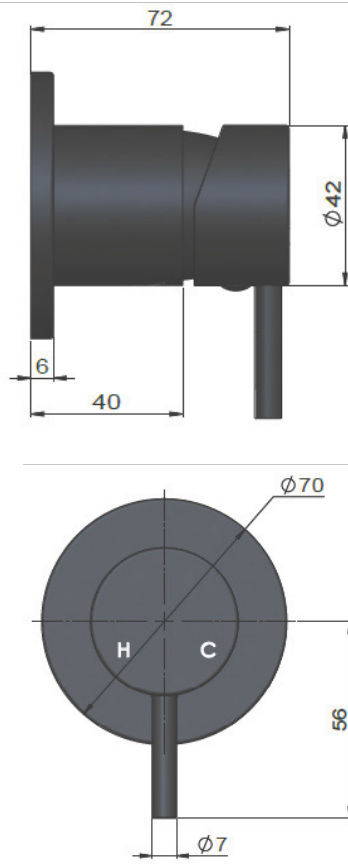
### FEATURES

- Refer to the Meir website for warranty terms & conditions, and available finishes
- European components and cartridge
- Reinforced rubber seal and lining
- Solid brass construction
- Box Weight 1 Kg
- Flow rate 18L p/m at 3 bar pressure.

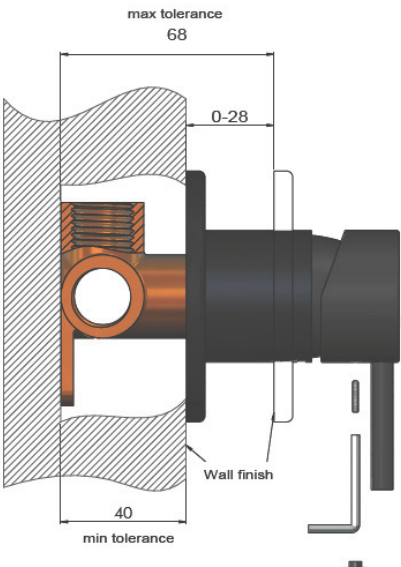
### CARE

- Do not install tapware using any form of acetone silicones.
- Do not apply physical items (such as tools) directly to product.
- Never use house-hold or commercial detergents, citrus based cleaners, or abrasive cleaners.
- Clean using a mild washing soap solution rinsed, and dry with a soft cloth.
- Check for any product defects before installation.
- Refer to the installation manual for correct installation.

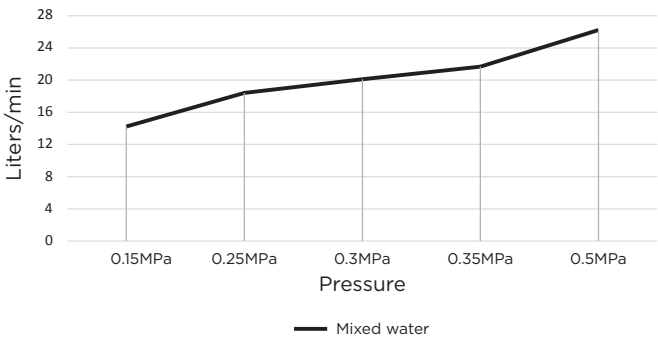
### SPECIFICATIONS



### TOLERANCES



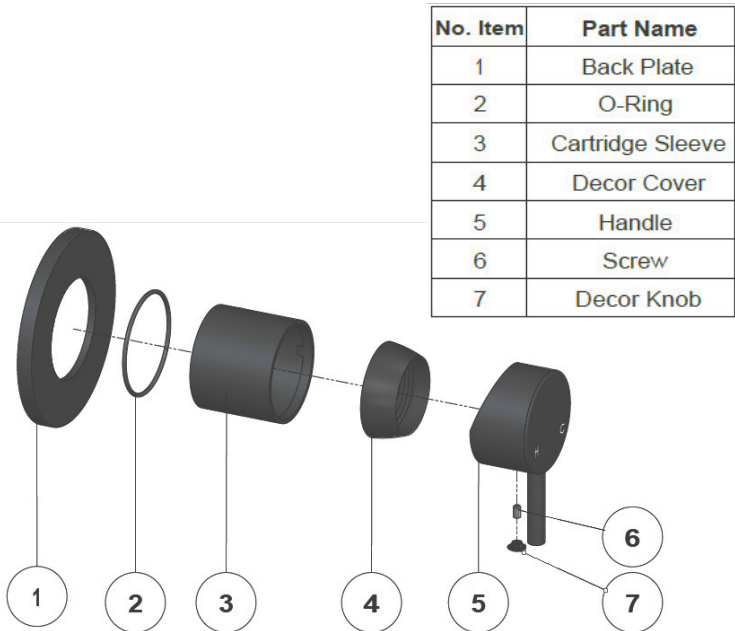
### FLOW RATE GRAPH



### CREDENTIALS

- Watermark AS/NZS 3718WMKA25013

### EXPLODED VIEW



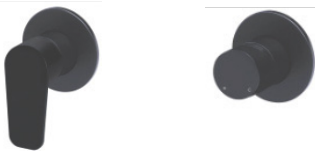


# MW03-FIN

## WALL MIXER FINISH KIT

meir®

### HANDLE VARIANTS



Paddle:MW03PD-FIN Paddle:MW03PN-FIN

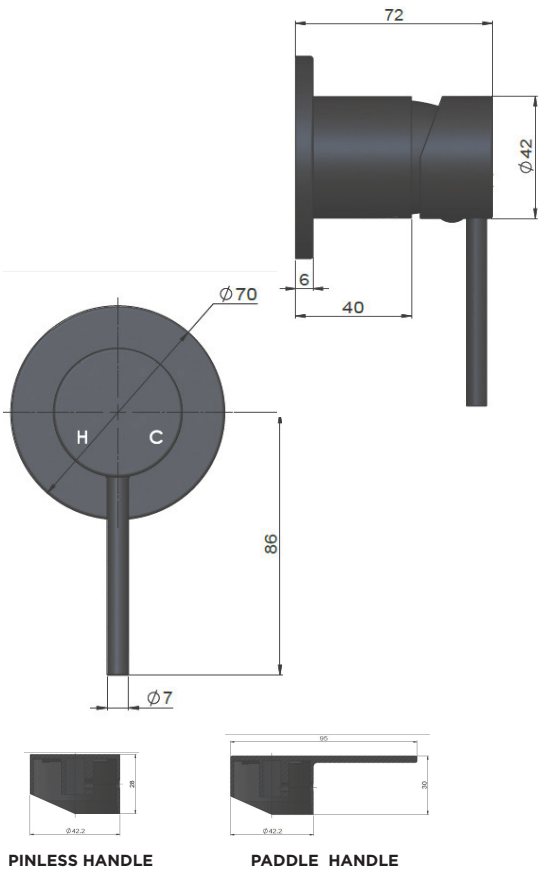
### FEATURES

- Refer to the Meir website for warranty terms & conditions, and available finishes
- Flow rate 18L p/m at 3 bar pressure.
- European components and cartridge
- Reinforced rubber seal and lining
- Solid brass construction
- used in conjunction with the MW13BDY in wall body.

### CARE

- Do not install tapware using any form of acetone silicones.
- Do not apply physical items (such as tools) directly to product.
- Never use house-hold or commercial detergents, citrus based cleaners, or abrasive cleaners.
- Clean using a mild washing soap solution rinsed, and dry with a soft cloth.
- Check for any product defects before installation.
- Refer to the installation manual for correct installation.

### SPECIFICATIONS

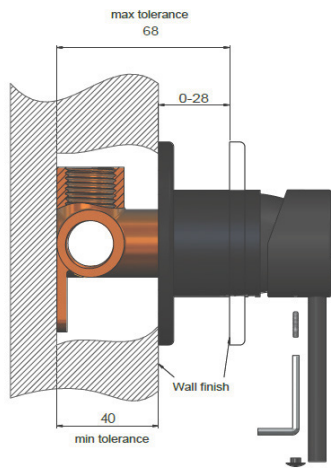


PINLESS HANDLE

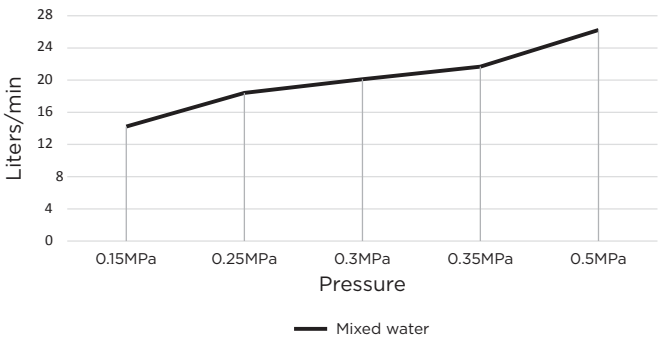
PADDLE HANDLE



### TOLERANCES



### FLOW RATE GRAPH

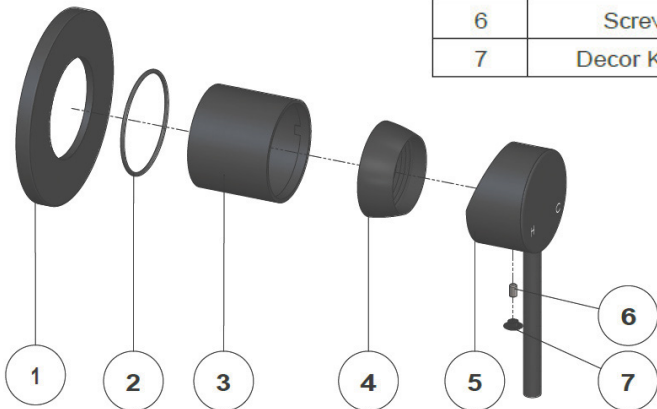


### CREDENTIALS

- Watermark AS/NZS 3718WMKA25013

### EXPLODED VIEW

No.	Item	Part Name
1		Back Plate
2		O-Ring
3		Cartridge Sleeve
4		Decor Cover
5		Handle
6		Screw
7		Decor Knob

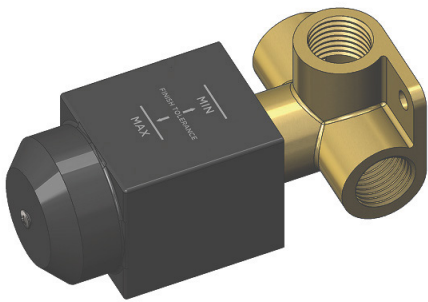




# MW13BDY

## WALL MIXER CONCEALED BODY

meir®



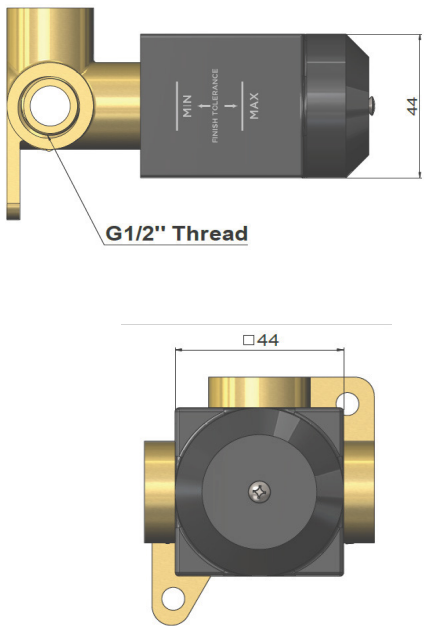
### FEATURES

- Refer to the Meir website for warranty terms & conditions, and available finishes
- Flow rate 18L p/m at 3 bar pressure.
- European components and cartridge
- Solid brass construction

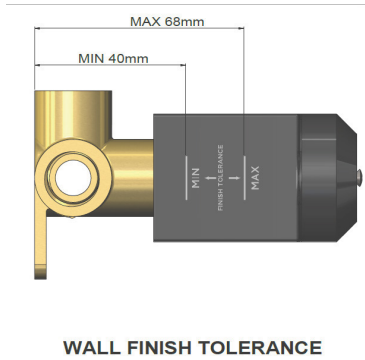
### CARE

- Do not install tapware using any form of acetone silicones.
- Do not apply physical items (such as tools) directly to product.
- Never use house-hold or commercial detergents, citrus based cleaners, or abrasive cleaners.
- Clean using a mild washing soap solution rinsed, and dry with a soft cloth.
- Check for any product defects before installation.
- Refer to the installation manual for correct installation.

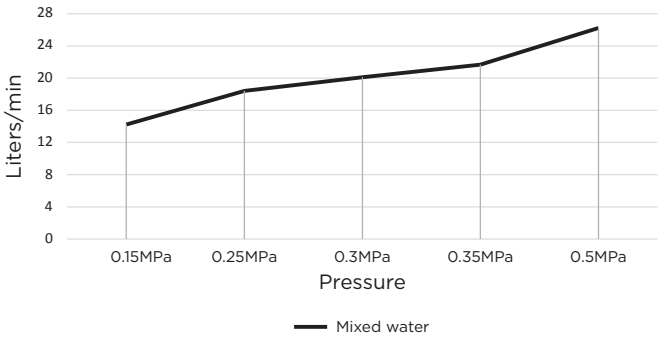
### SPECIFICATIONS



### TOLERANCES



### FLOW RATE GRAPH



### CREDENTIALS

- Watermark AS/NZS 3718WMKA25013

### EXPLODED VIEW

